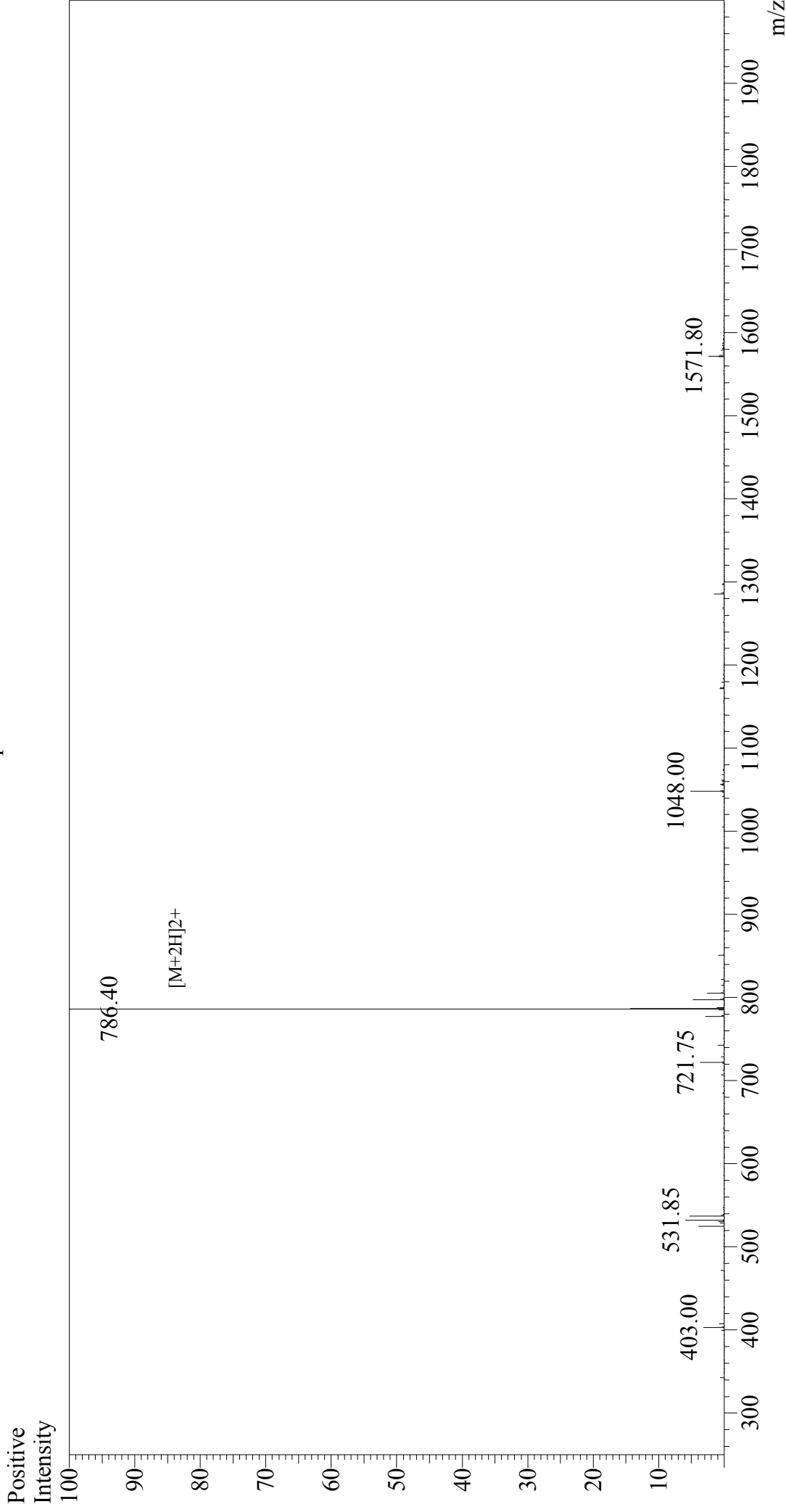


Mass Spectrum



Sample Information

Acquired by :	Gary	Interface	:ESI	Interface Bias	: +4.5 kV
Month-Day Processed :	06/29/18	Nebulizing Gas Flow :	1.5L/min	Drying Gas Flow	:5 L/min
Time Processed :	18:14:26	CDL Temp :	250°C	T.Flow	:0.2 ml/min
Injection Volume :	0.2	Block Temp :	200°C	B.conc	:50%H2O/50%MeOH
Sample Name :	[Glu1]-Fibrinopeptide B				
Cat. No. :	RP20439				
Lot. No. :	PE2701806				
Theoretical MW :	1570.60				
Observed MW :	1570.80				