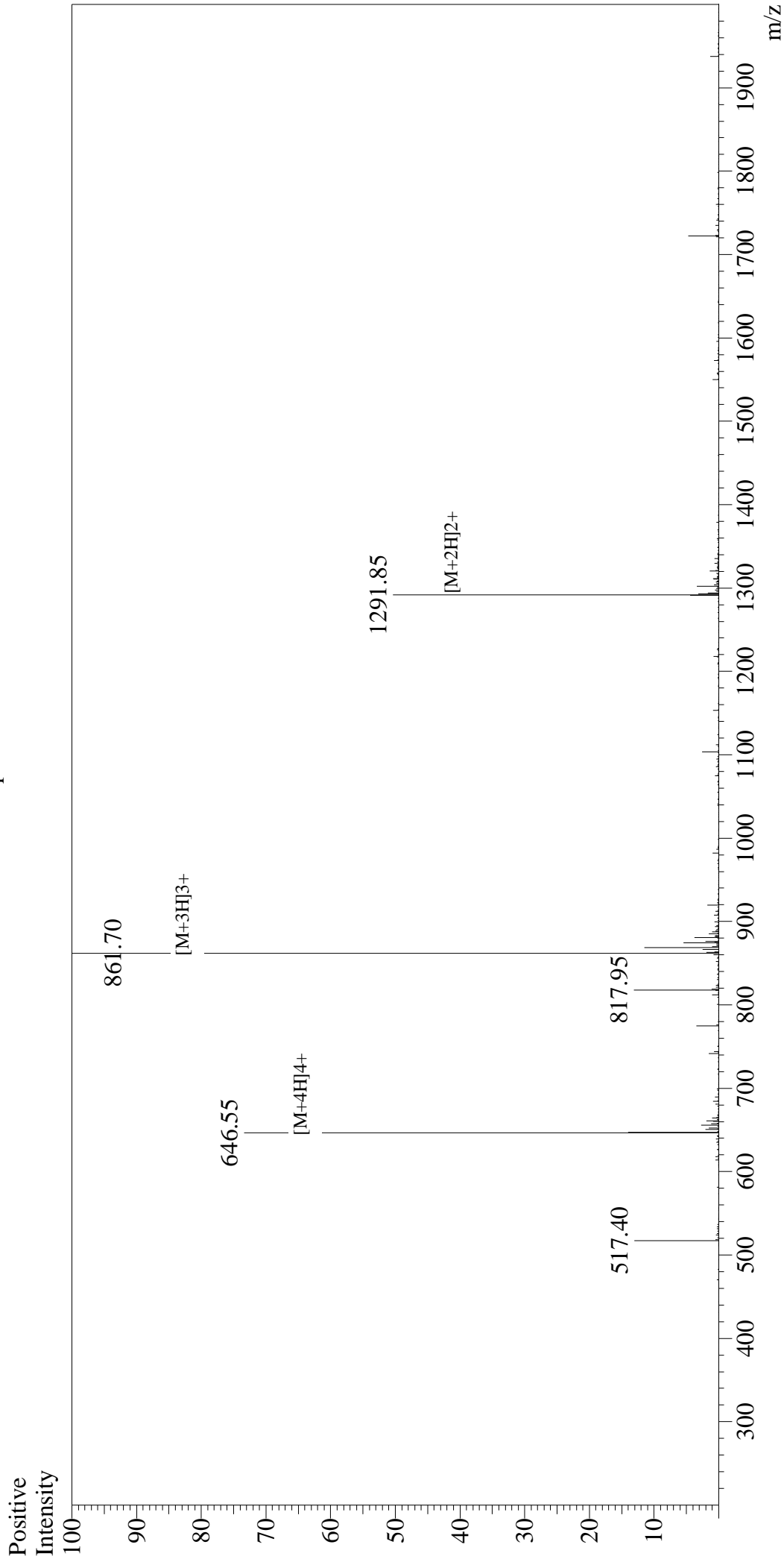


# Mass Spectrum



## Sample Information

User : Gary  
Month-Day Processed : 02/14/17  
Time Processed : 17:08:04  
Injection Volume : 0.2  
Sample Name : MOG(35-55)  
Cat No. : RPI0245  
Lot No. : PE3261702  
Theoretical MW : 2581.98  
Observed MW : 2582.10

Interface : ESI  
Nebulizing Gas Flow : 1.5L/min  
CDL Temp : 250°C  
Block Temp : 200°C

Interface Bias : +4.5kV  
Drying Gas Flow : 5 L/min  
T.Flow : 0.2ml/min  
B.conc : 50%H2O/50%MeOH