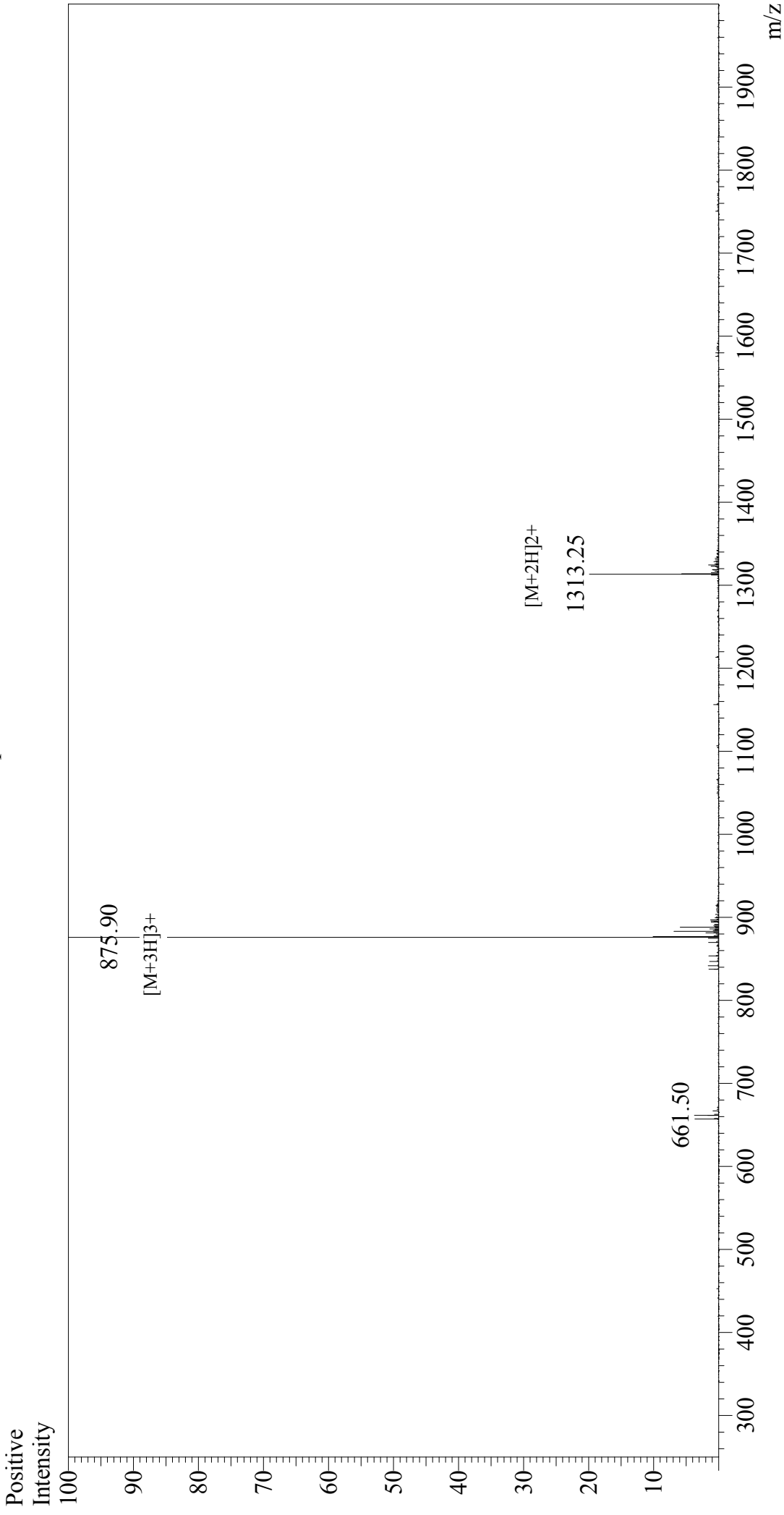


# Mass Spectrum



## Sample Information

Acquired by : Gary  
Month-Day Processed : 05/17/18  
Time Processed : 18:20:10  
Injection Volume : 0.2  
Sample Name : M2e, human  
Cat. No. : RP20206  
Lot. No. : PE8871805  
Theoretical MW : 2624.80  
Observed MW : 2624.70

Interface : ESI  
Nebulizing Gas Flow : 1.5L/min  
CDL Temp : 250°C  
Block Temp : 200°C

Interface Bias : +4.5 kV  
Drying Gas Flow : 5 L/min  
T.Flow : 0.2 ml/min  
B.conc : 50%H2O/50%MeOH