

Sample Name :Proctolin

Cat. No. : RP10475 Lot. No. : PE2501806

Pump A : 0.065% trifluoroacetic in 100% water (v/v)

Pump B : 0.05% trifluoroacetic in 100% acetonitrile (v/v)

Total Flow:1 ml/min

Wavelength:220 nm

<<LC Time Program>>

| Time  | Module     | Command      | Value |
|-------|------------|--------------|-------|
| 0.01  | Pumps      | Pump B Conc. | 5     |
| 25.00 | Pumps      | Pump B Conc. | 65    |
| 25.01 | Pumps      | Pump B Conc. | 95    |
| 27.00 | Pumps      | Pump B Conc. | 95    |
| 27.01 | Pumps      | Pump B Conc. | 5     |
| 32.00 | Pumps      | Pump B Conc. | 5     |
| 32.01 | Controller | Stop         |       |

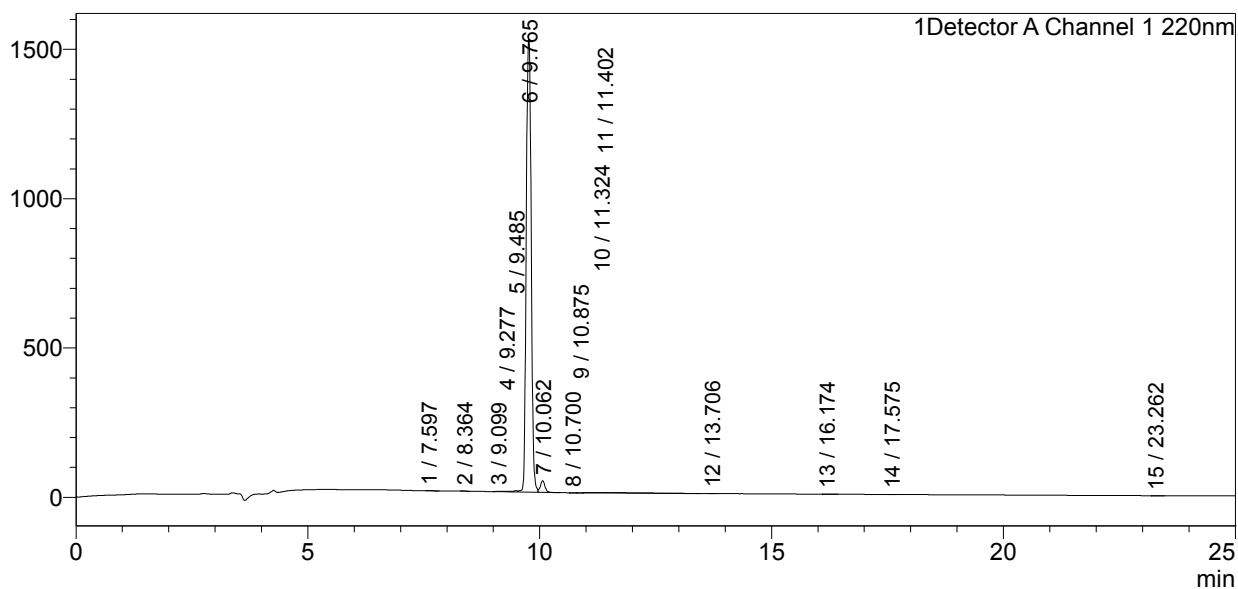
<<Column Performance>>

<Detector A>

Column :Inertsil ODS-3 4.6 x 250 mm

### <Chromatogram>

mV



### <Peak Table>

Detector A Channel 1 220nm

| Peak# | Ret. Time | Area     | Height  | Area%   |
|-------|-----------|----------|---------|---------|
| 1     | 7.597     | 1440     | 207     | 0.012   |
| 2     | 8.364     | 1482     | 237     | 0.013   |
| 3     | 9.099     | 9224     | 1316    | 0.079   |
| 4     | 9.277     | 16426    | 1722    | 0.141   |
| 5     | 9.485     | 28244    | 4126    | 0.243   |
| 6     | 9.765     | 11184064 | 1517094 | 96.124  |
| 7     | 10.062    | 272976   | 39218   | 2.346   |
| 8     | 10.700    | 1128     | 160     | 0.010   |
| 9     | 10.875    | 1893     | 303     | 0.016   |
| 10    | 11.324    | 22766    | 1349    | 0.196   |
| 11    | 11.402    | 89449    | 1425    | 0.769   |
| 12    | 13.706    | 1606     | 291     | 0.014   |
| 13    | 16.174    | 1937     | 205     | 0.017   |
| 14    | 17.575    | 1374     | 250     | 0.012   |
| 15    | 23.262    | 1018     | 98      | 0.009   |
| Total |           | 11635029 | 1568003 | 100.000 |