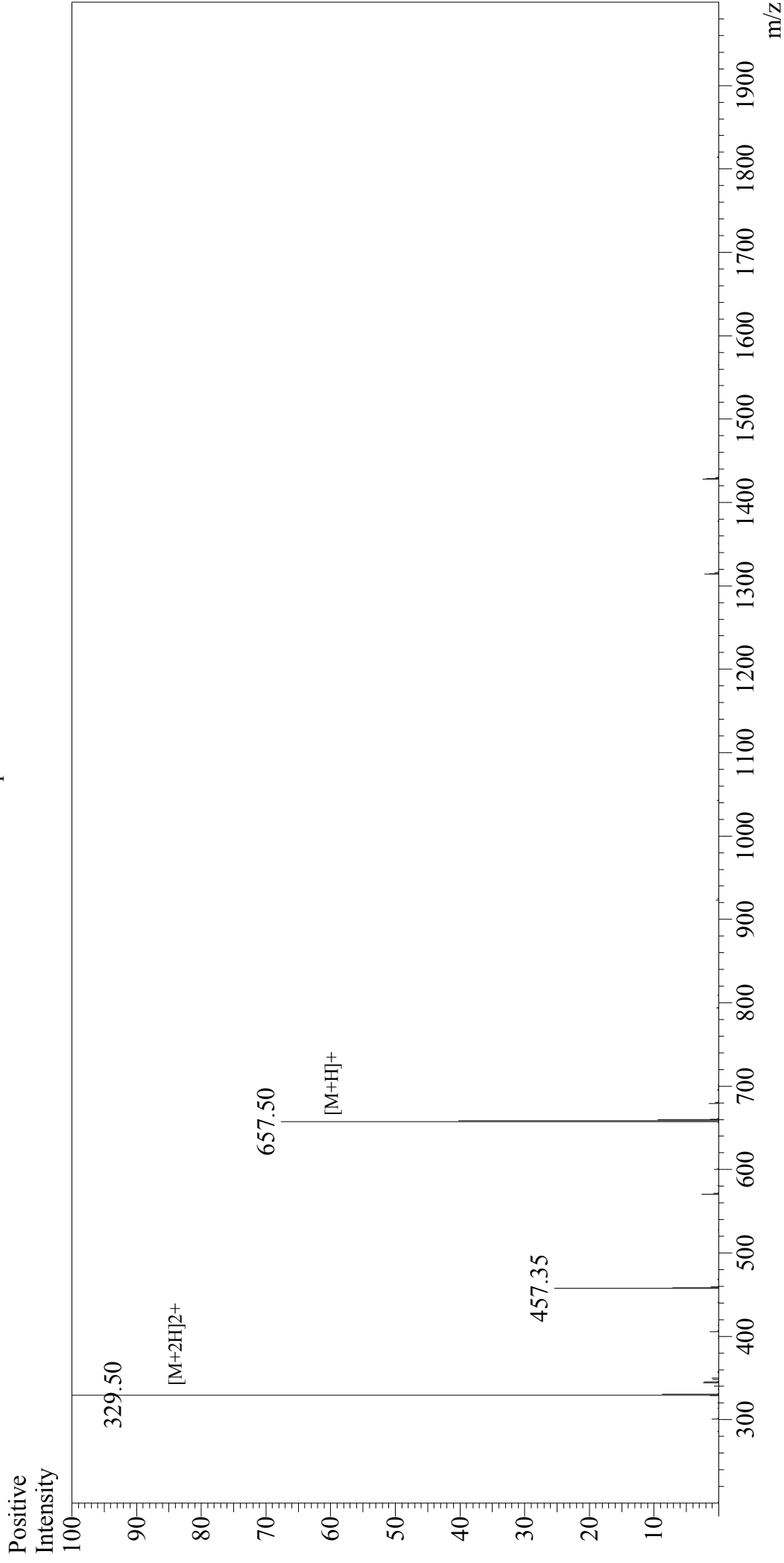


Mass Spectrum



Sample Information

User : Gary
Month-Day Processed : 03/23/17
Time Processed : 13:54:20
Injection Volume : 0.2
Sample Name : Protease-Activated Receptor-2 Activating Peptide
Cat No. : RPI9975
Lot No. : PE1221703
Theoretical MW : 656.83
Observed MW : 657.00

Interface : ESI
Nebulizing Gas Flow : 1.5L/min
CDL Temp : 250°C
Block Temp : 200°C

Interface Bias : +4.5kV
Drying Gas Flow : 5 L/min
T.Flow : 0.2ml/min
B.conc : 50%H2O/50%MeOH