

Sample Name :Egg Laying Hormone, aplysia
 Cat No. :RP10583
 Lot No. :E4744719I
 Time Processed :21:18:17
 Month-Day-Year Processed :09/29/19

Pump A : 0.065% trifluoroacetic in 100% water (v/v)
 Pump B : 0.05% trifluoroacetic in 100% acetonitrile (v/v)
 Total Flow:1 ml/min
 Wavelength:220 nm

<<LC Time Program>>

| Time | Module | Command | Value |
|-------|------------|-----------------|-------|
| 0.01 | Pumps | Solvent B Conc. | 5 |
| 25.00 | Pumps | Solvent B Conc. | 65 |
| 25.01 | Pumps | Solvent B Conc. | 95 |
| 27.00 | Pumps | Solvent B Conc. | 95 |
| 27.01 | Pumps | Solvent B Conc. | 5 |
| 33.00 | Pumps | Solvent B Conc. | 5 |
| 33.01 | Controller | Stop | |

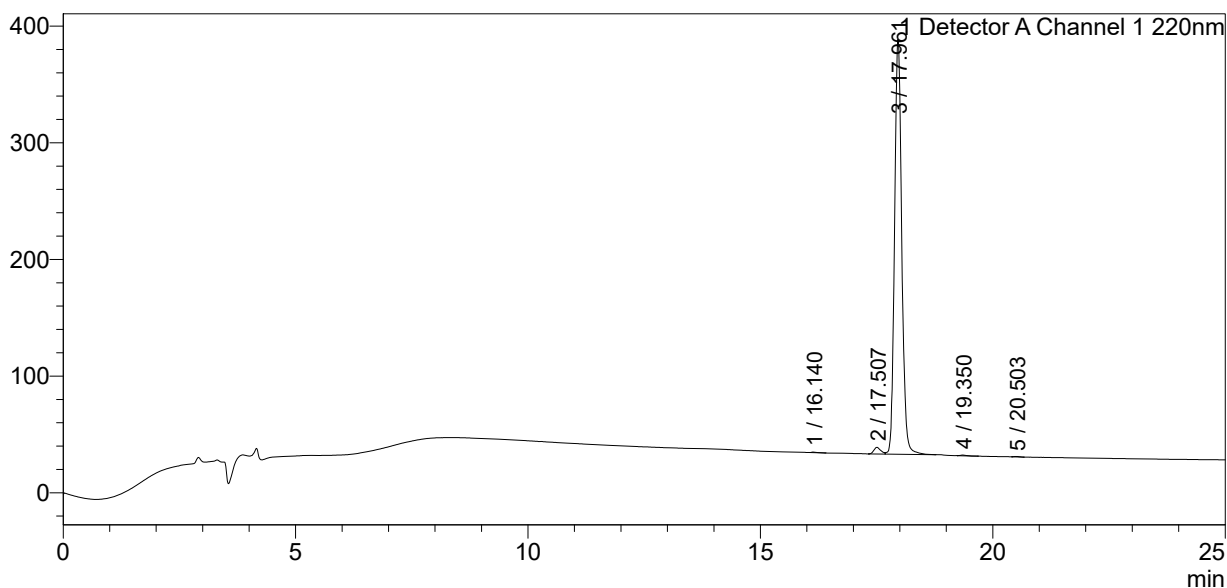
<<Column Performance>>

<Detector A>

Column : Inertsil ODS-3 4.6 x 250 mm
 Equipment: ZJ17010508

<Chromatogram>

mV



<Peak Table>

Detector A Channel 1 220nm

| Peak# | Ret. Time | Area | Height | Area% |
|-------|-----------|---------|--------|---------|
| 1 | 16.140 | 4269 | 607 | 0.110 |
| 2 | 17.507 | 59464 | 5776 | 1.530 |
| 3 | 17.961 | 3815478 | 355611 | 98.152 |
| 4 | 19.350 | 5235 | 602 | 0.135 |
| 5 | 20.503 | 2887 | 405 | 0.074 |
| Total | | 3887334 | 363000 | 100.000 |