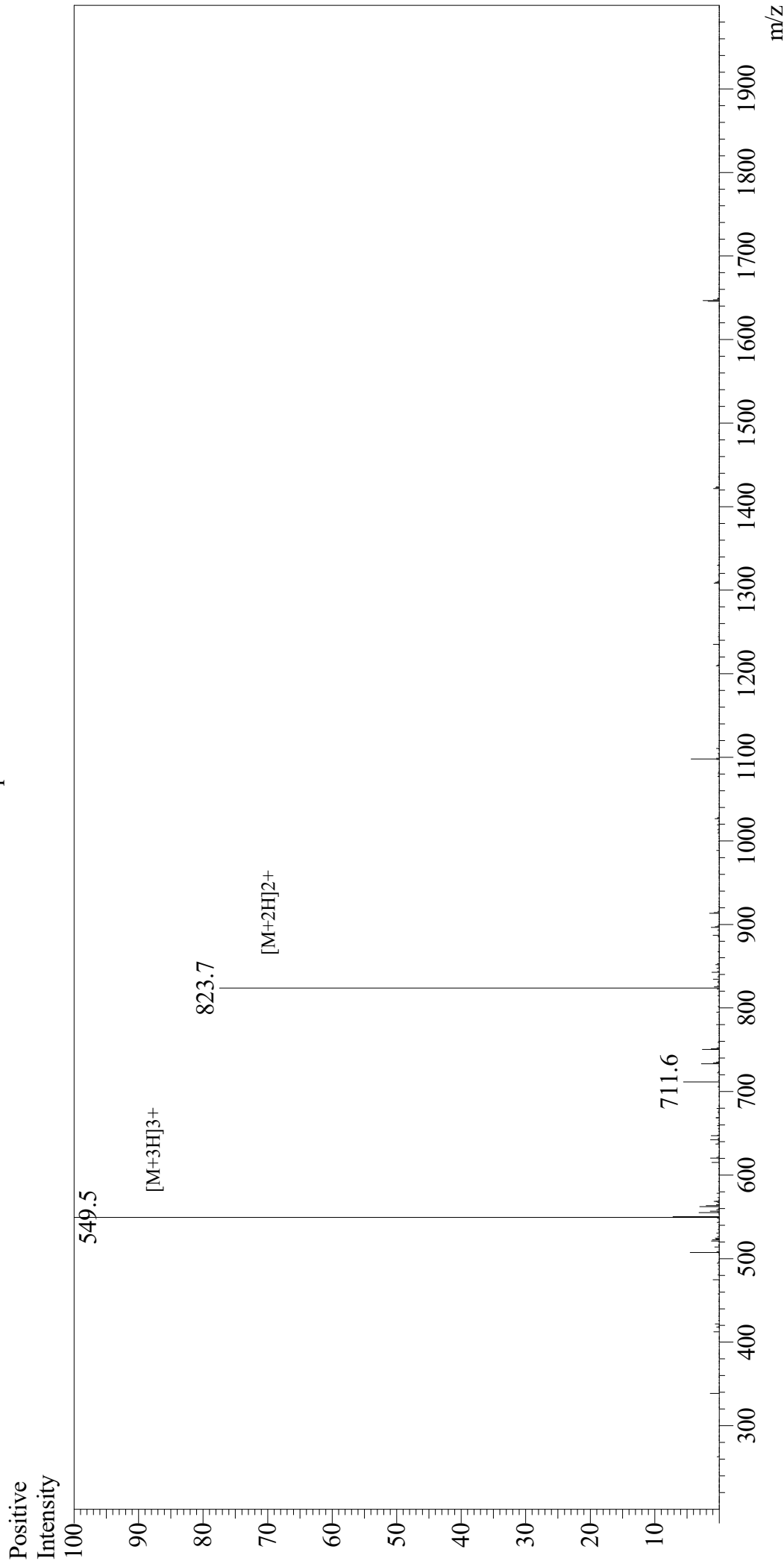


Mass Spectrum



Sample Information

User : Gary
Month-Day Processed : 08/06/20
Time Processed : 03:28:07 PM
Injection Volume : 0.3
Sample Name : InsB 9-23
Cat No. : RP20391
Lot No. : E6897620H
Theoretical MW : 1645.90
Observed MW : 1645.5

Interface : ESI
Nebulizing Gas Flow : 1.5L/min
CDL Temp : 250
Block Temp : 200

Equipment : GK11010007
Interface Bias : +4.5kV
Drying Gas Flow : 5 L/min
T.Flow : 0.2ml/min
B.conc : 50%H₂O/50%MeOH