

Sample Name :Calcitonin Gene Related Peptide (CGRP) (8-37), human
Cat. No. : RP11089
Lot. No. :E4795219I
Time Processed :8:21:31
Month-Day-Year Processed :09/18/2019

Pump A : 0.065% trifluoroacetic in 100% water (v/v)
Pump B : 0.05% trifluoroacetic in 100% acetonitrile (v/v)
Total Flow:1 ml/min
Wavelength:220 nm

Time	Unit	Command	Value	Comment
0.01	Pumps	Pump B Conc.	5	
25.00	Pumps	Pump B Conc.	65	
25.01	Pumps	Pump B Conc.	95	
27.00	Pumps	Pump B Conc.	95	
27.01	Pumps	Pump B Conc.	5	
35.00	Pumps	Pump B Conc.	5	
35.01	Controller	Stop		

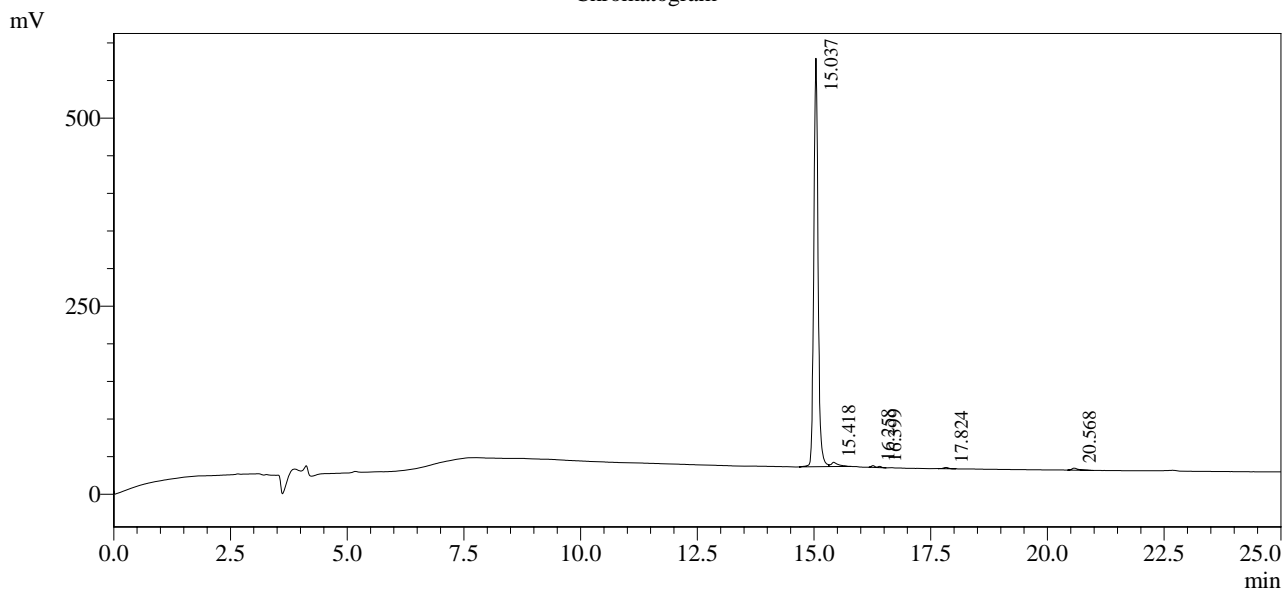
<<Column Performance>>

<Detector A>

Column : Inertsil ODS-3 4.6 x 250 mm

Equipment :SS-CM-0310

Chromatogram



1 Det.A Ch1 / 220nm

Peak Table

Detector A Ch1 220nm

Peak#	Ret. Time	Area	Height	Area %
1	15.037	3481057	543036	96.675
2	15.418	59591	5702	1.655
3	16.258	12704	2382	0.353
4	16.399	8785	1704	0.244
5	17.824	12965	1686	0.360
6	20.568	25681	2619	0.713
Total		3600782	557128	100.000