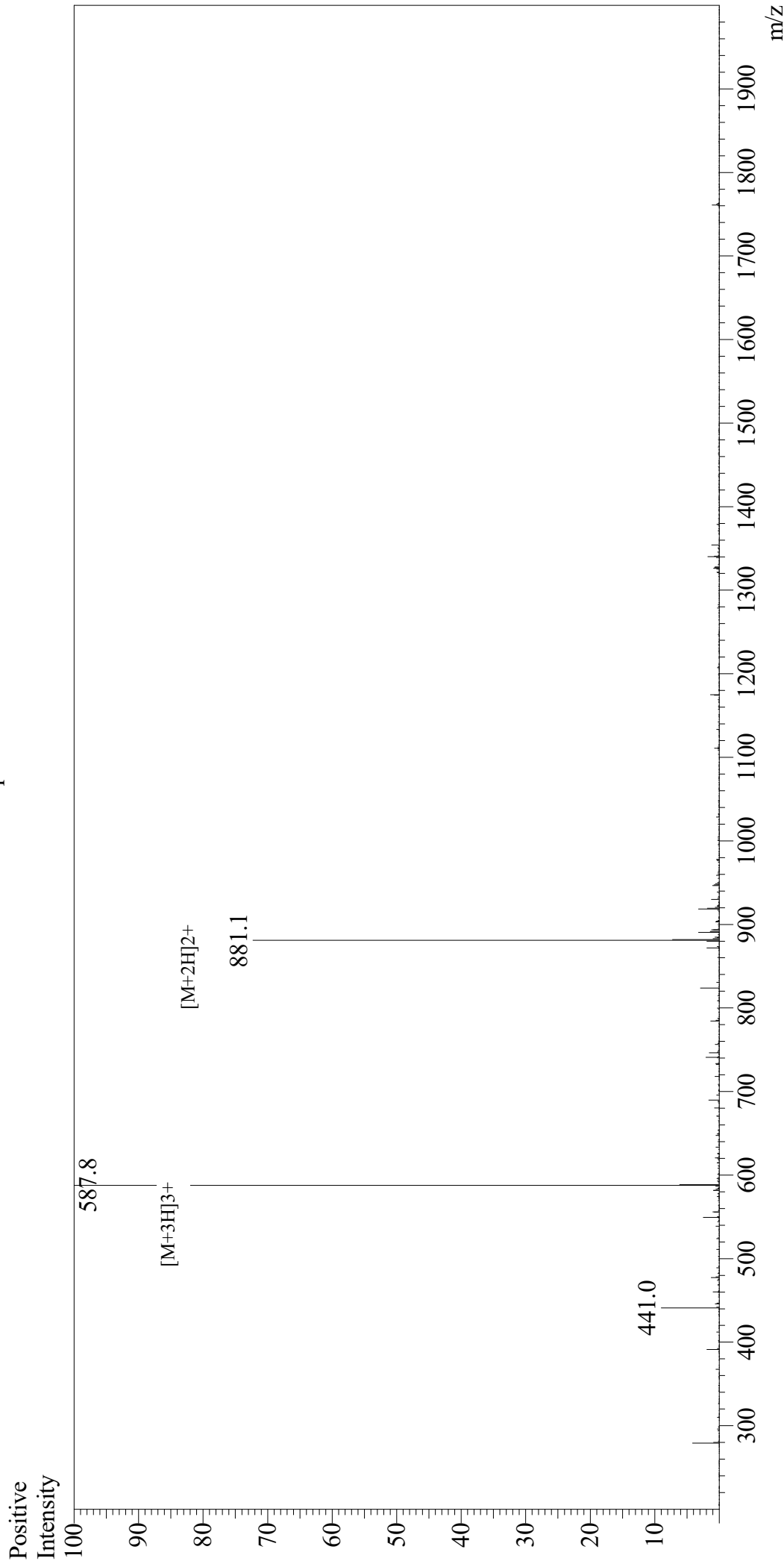


Mass Spectrum



Sample Information

User : Gary
Month-Day Processed : 07/07/20
Time Processed : 10:22:33 PM
Injection Volume : 0.3
Sample Name : Angiotensinogen (1-14), human
Cat No. : RP10253
Lot No. : E7155320G
Theoretical MW : 1760.10
Observed MW : 1760.4

Interface : ESI
Nebulizing Gas Flow : 1.5L/min
CDL Temp : 250
Block Temp : 200

Equipment : GK11010007
Interface Bias : +4.5kV
Drying Gas Flow : 5 L/min
T.Flow : 0.2ml/min
B.conc : 50%H₂O/50%MeOH