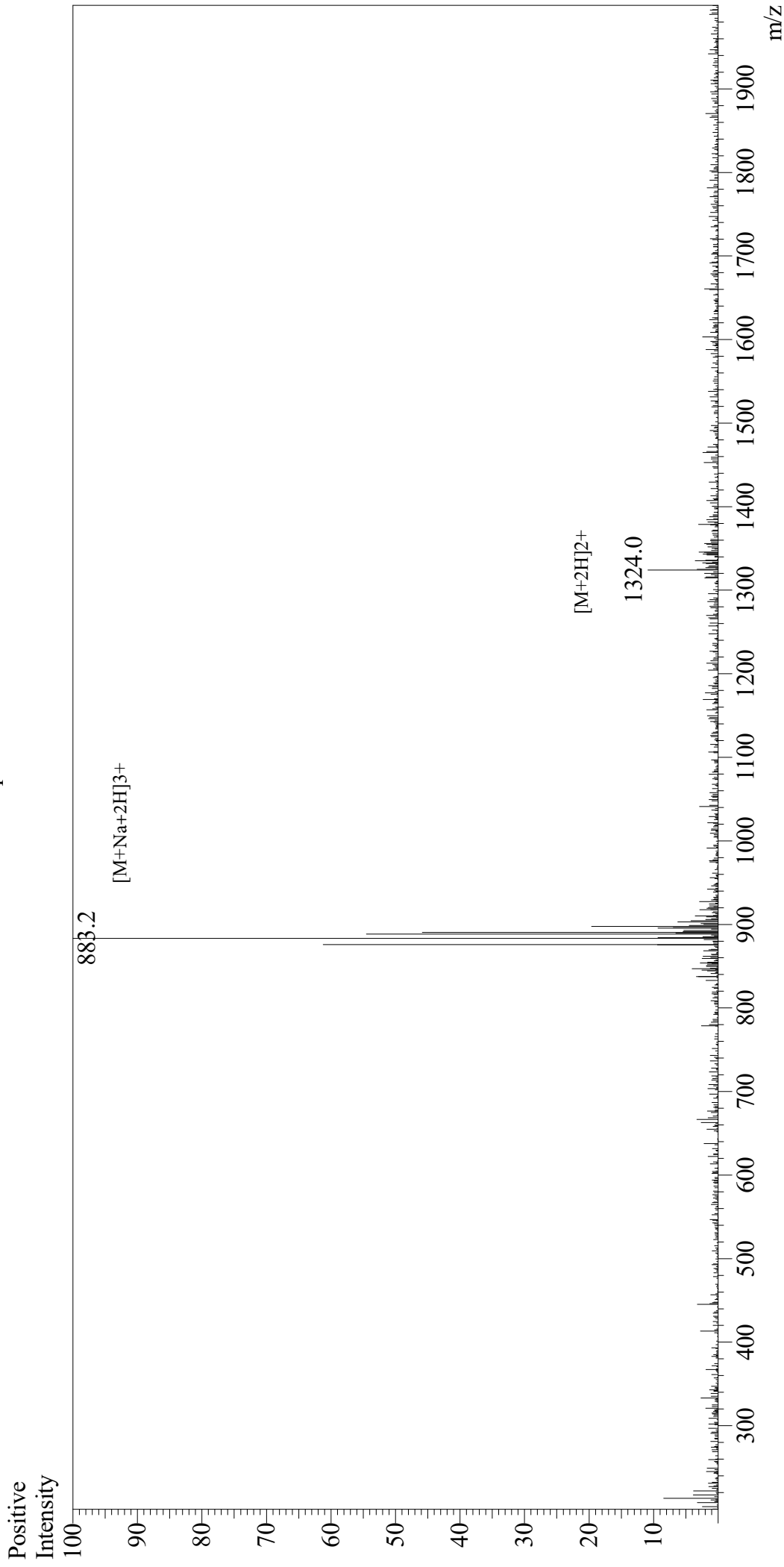


# Mass Spectrum



Sample Information  
User : Gary  
Month-Day Processed : 12/11/18  
Time Processed : 04:23:36 PM  
Injection Volume : 0.1  
Sample Name : M2e, human  
Cat No. : RP20206  
Lot No. : PE8811812  
Theoretical MW : 2624.80  
Observed MW : 2625.6

Interface : ESI  
Nebulizing Gas Flow : 1.5L/min  
CDL Temp : 250  
Block Temp : 200

Equipment : GK11010007  
Interface Bias : +4.5kV  
Drying Gas Flow : 5 L/min  
T.Flow : 0.2ml/min  
B.conc : 50%H2O/50%MeOH