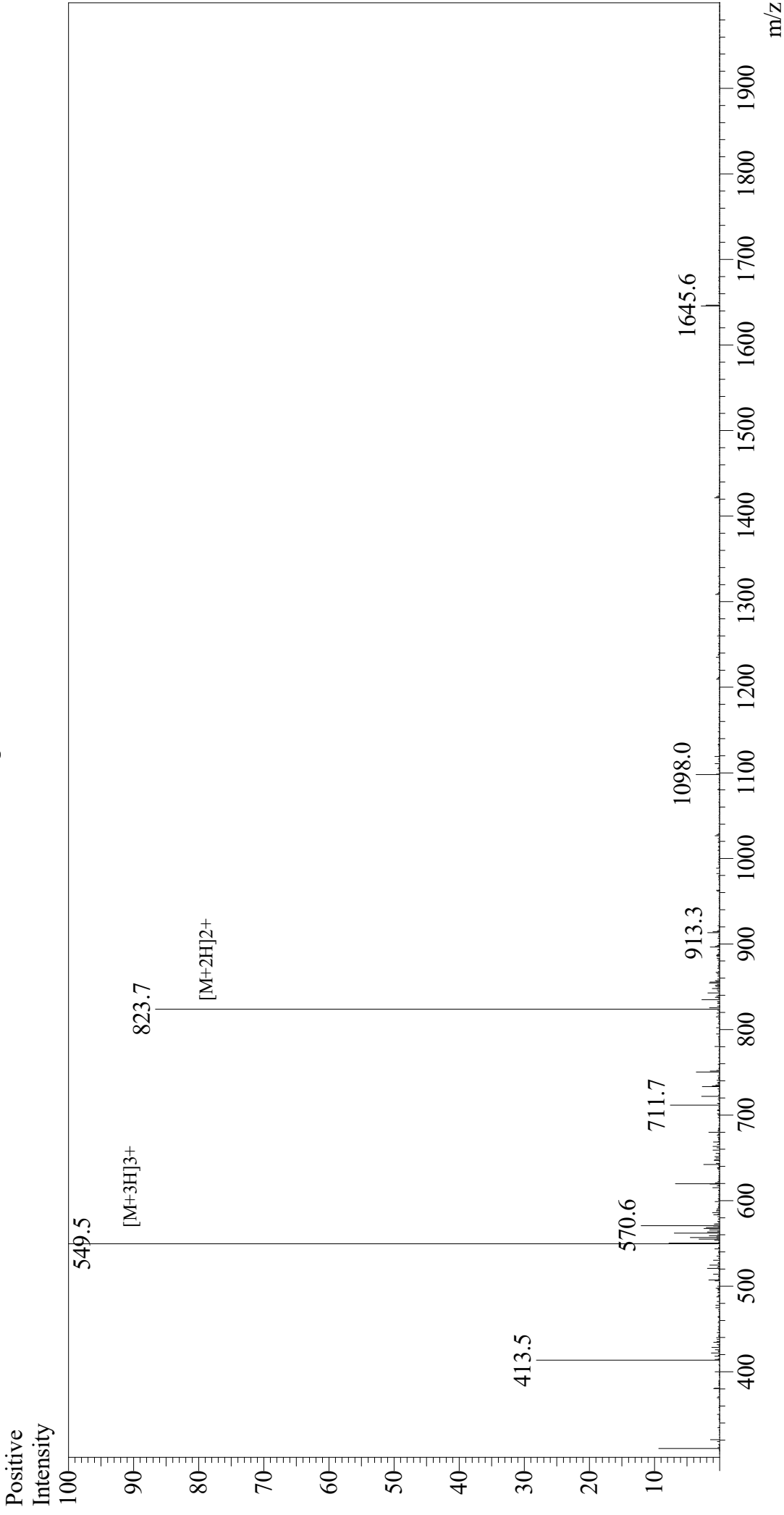


Mass Spectrum



Sample Information

Month-Day Processed : 11/12/20
Time Processed : 11:24:40 PM
Injection Volume : 0.5
Sample Name : InsB 9-23
Cat No. : RP20391
Lot No. : E4697320K
Theoretical MW : 1645.90
Observed MW : 1645.5

Interface : ESI
Nebulizing Gas Flow : 1.5L/min
CDL Temp : 250
Block Temp : 200

Equipment : GK11010007
Interface Bias : +4.5 kV
Drying Gas Flow : 5 L/min
T.Flow : 0.2 ml/min
B.conc : 50% H₂O/50% MeOH