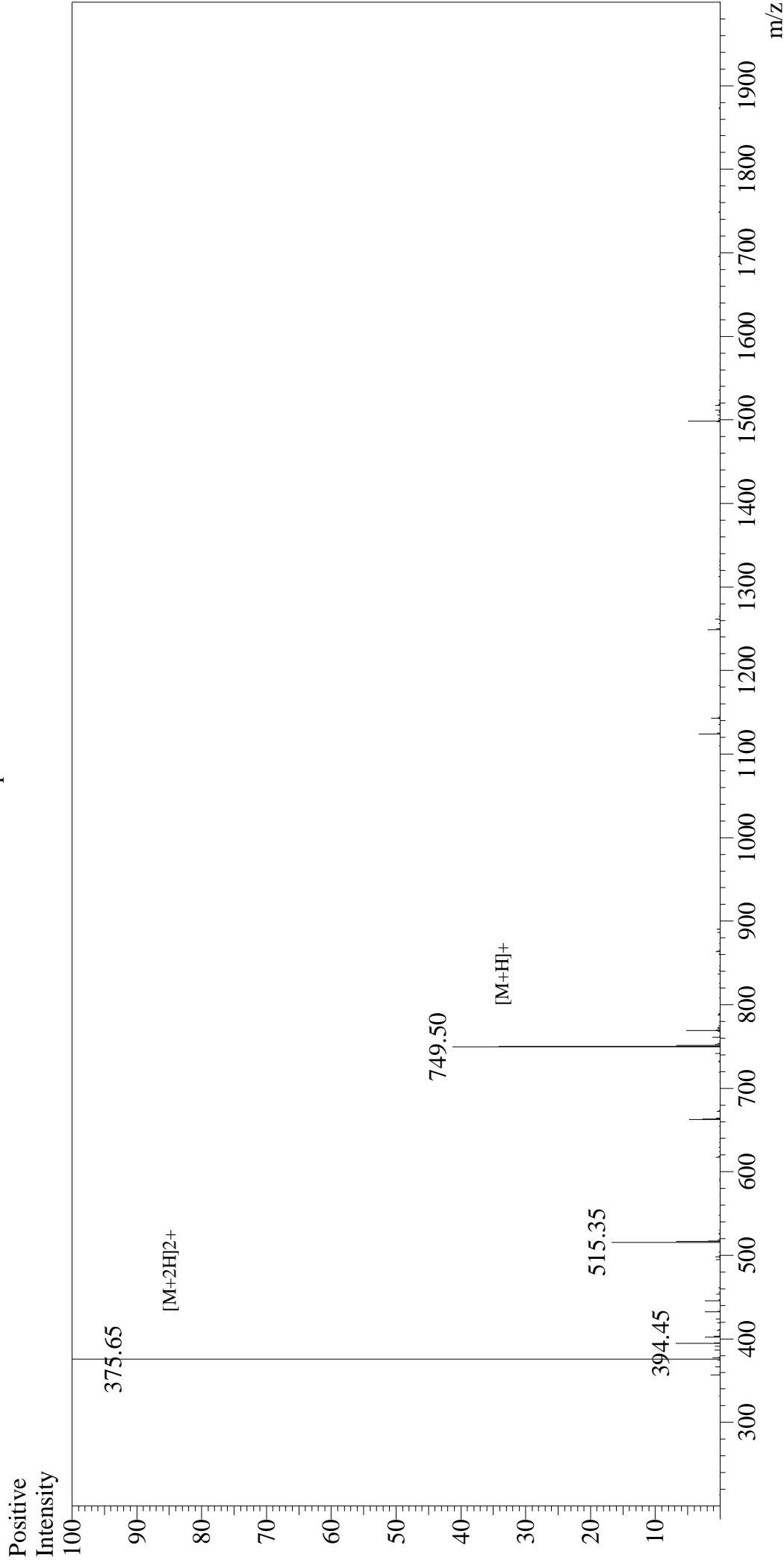


Mass Spectrum



Sample Information

User : Gary
Month-Day Processed : 11/12/16
Time Processed : 15:42:41
Injection Volume : 0.2
Sample Name : PAR-1 agonist peptide
Cat No. : RPI9979
Lot No. : PE4821611
Theoretical MW : 748.87
Observed MW : 749.30

Interface : ESI
Nebulizing Gas Flow : 1.5L/min
CDL Temp : 250°C
Block Temp : 200°C

Interface Bias : +4.5kV
Drying Gas Flow : 5 L/min
T.Flow : 0.2ml/min
B.conc : 50%H2O/50%MeOH