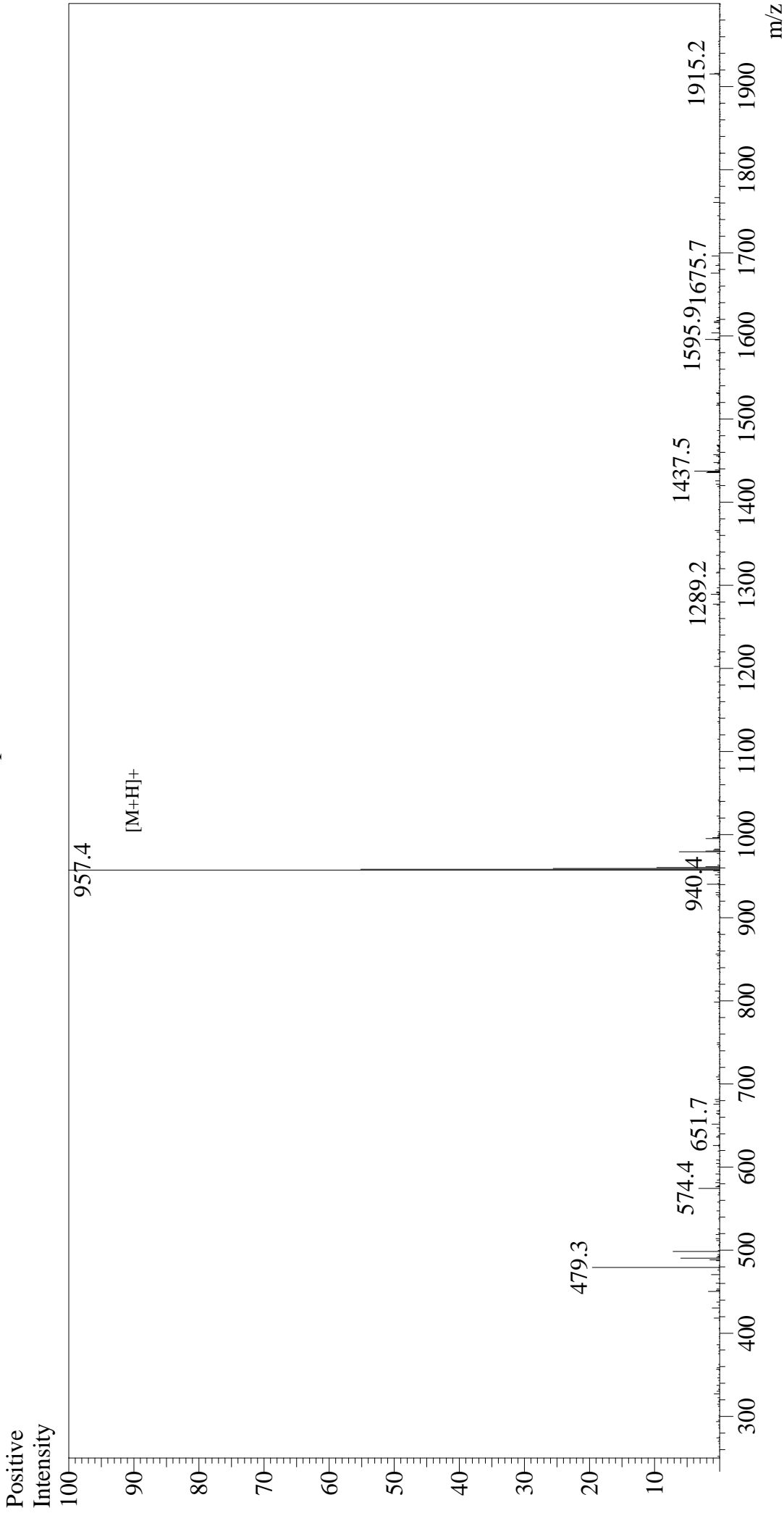


Mass Spectrum



Sample Information

Acquired by : Gary
 Month-Day Processed : 07/12/19
 Time Processed : Injection 17:46:33
 Volume : 0.3
 Sample Name : Crustacean Cardioactive Peptide (CCAP)
 Cat. No. : RP10572
 Lot. No. : E5714219F
 Theoretical MW : 957.10
 Observed MW : 956.4

Interface : ESI
 Nebulizing Gas Flow : 1.5L/min
 CDL Temp : 250
 Block Temp : 200

Equipment : GK11010007
 Interface Bias : +4.5 kV
 Drying Gas Flow : 5 L/min
 T.Flow : 0.2 ml/min
 B.conc : 50% H2O/50% MeOH