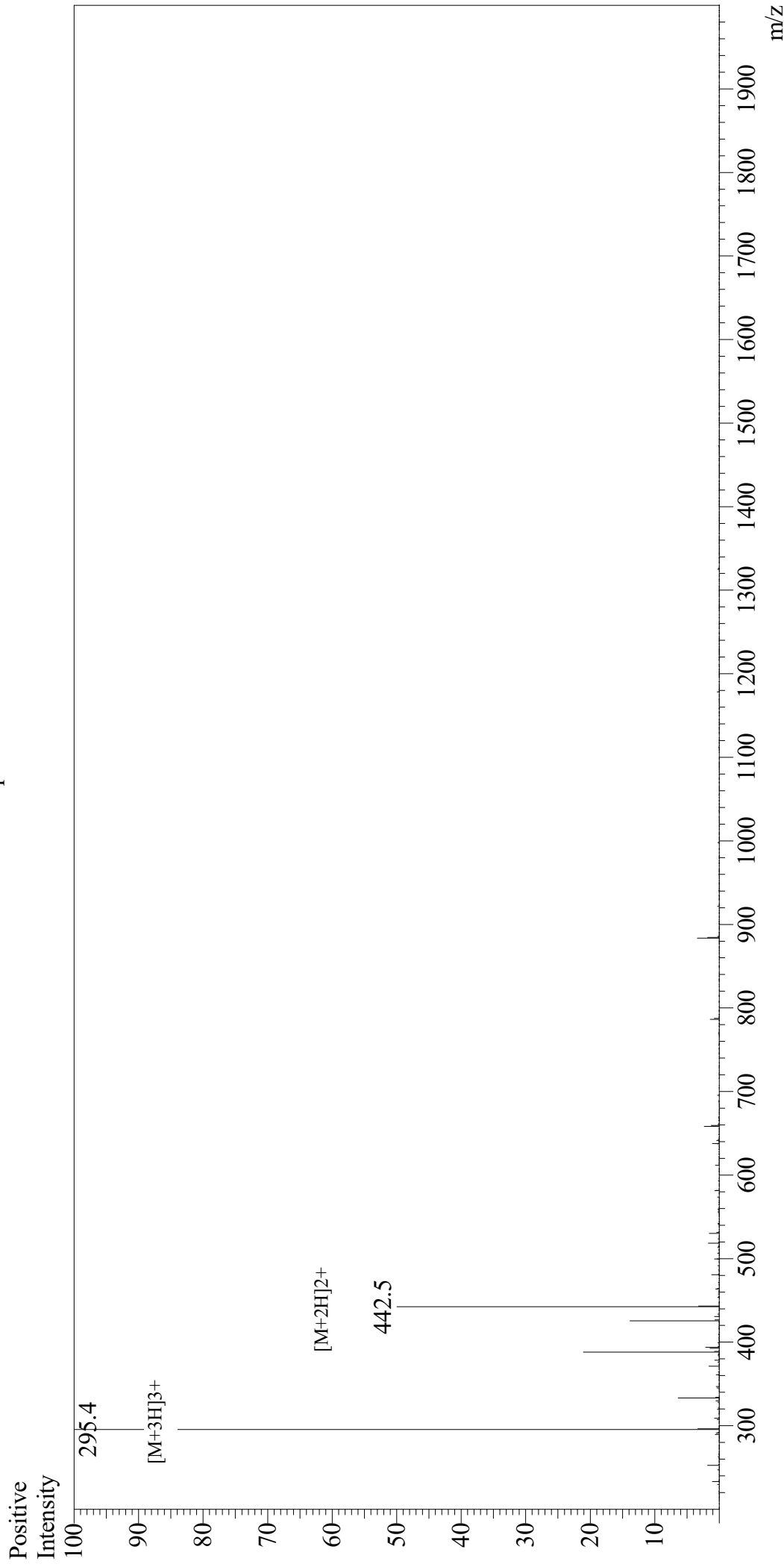


Mass Spectrum



Sample Information

User : Gary
Month-Day Processed : 09/18/19
Time Processed : 03:07:41 PM
Injection Volume : 0.3
Sample Name : Nuclear Localisation Signal Peptide
Cat No. : RP20292
Lot No. : E4864719I
Theoretical MW : 883.15
Observed MW : 883.2

Interface : ESI
Nebulizing Gas Flow : 1.5L/min
CDL Temp : 250
Block Temp : 200
Equipment : GK11010007
Interface Bias : +4.5kV
Drying Gas Flow : 5 L/min
T.Flow : 0.2ml/min
B.conc : 50%H2O/50%MeOH