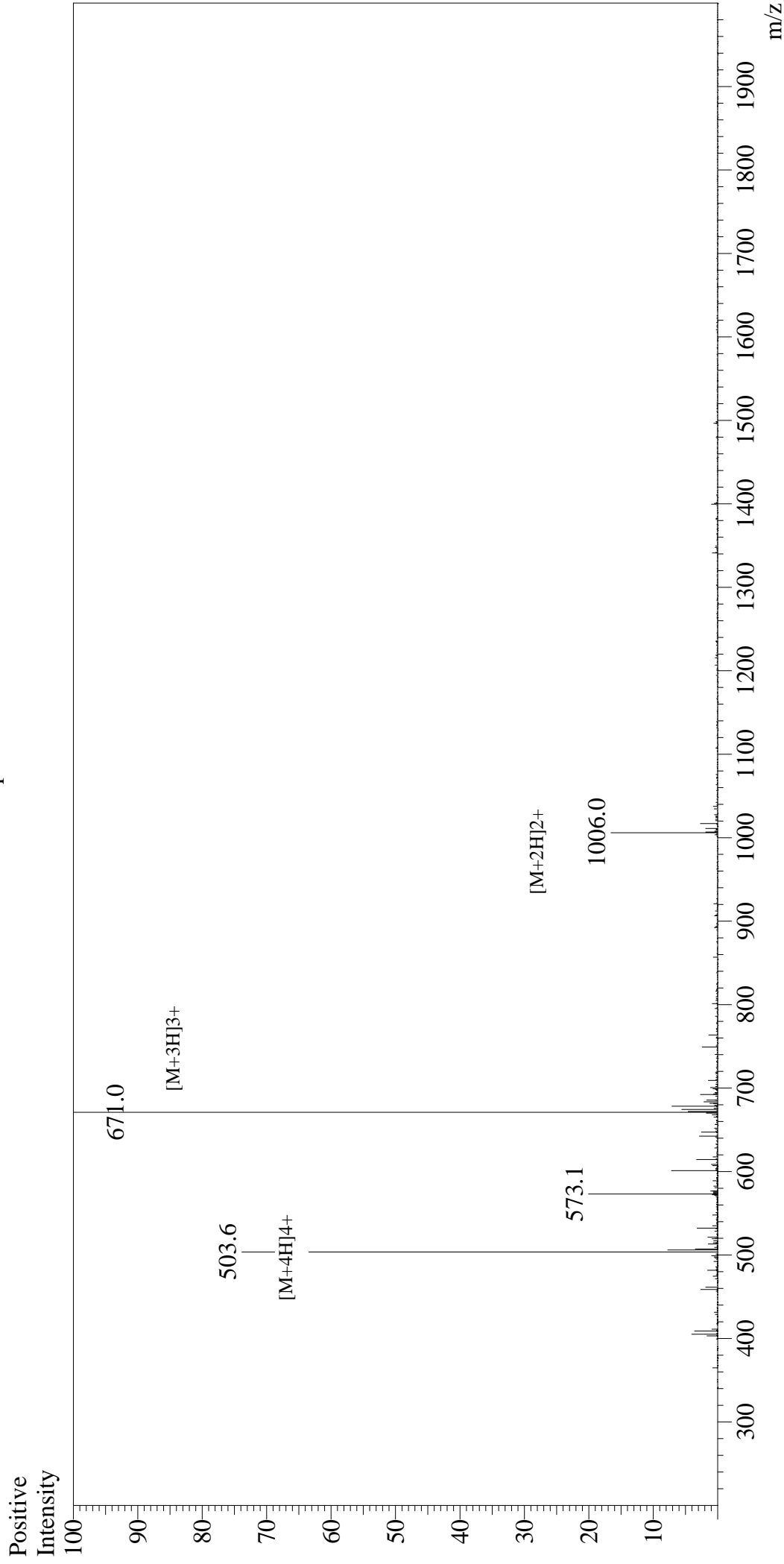


Mass Spectrum



Sample Information

User : Gary
Month-Day Processed : 11/01/18
Time Processed : 20:12:56
Injection Volume : 0.2
Sample Name : Systemin
Cat No. : RP10622
Lot No. : PE5671810
Theoretical MW : 2010.30
Observed MW : 2010.0

Interface : ESI
Nebulizing Gas Flow : 1.5L/min
CDL Temp : 250°C
Block Temp : 200°C
Equipment : GK11010007
Interface Bias : +4.5kV
Drying Gas Flow : 5 L/min
T.Flow : 0.2ml/min
B.conc : 50%H2O/50%MeOH