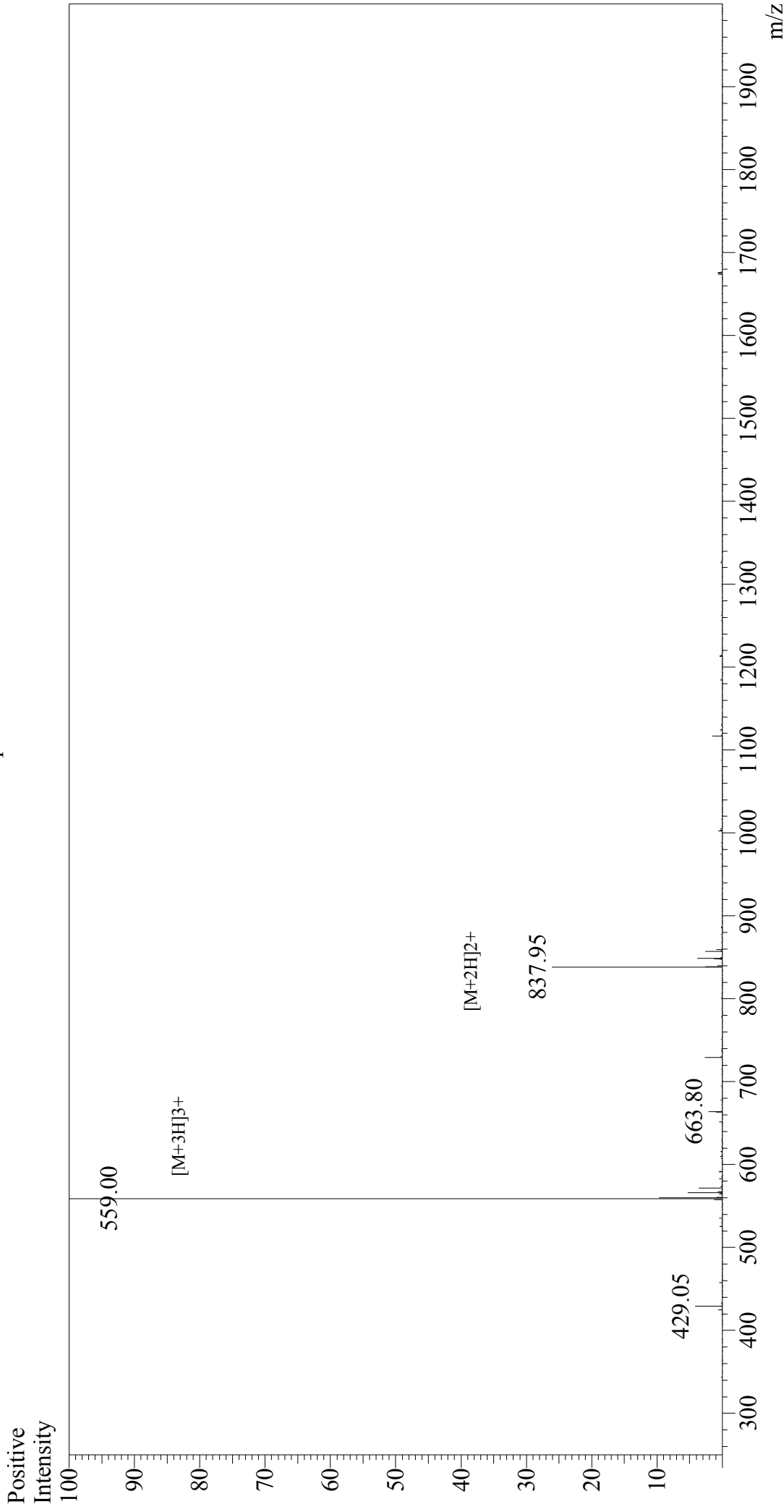


Mass Spectrum



Sample Information

Acquired by : Gary
Month-Day Processed : 07/20/18
Time Processed : 19:21:15
Injection Volume : 0.2
Sample Name : CLIP (86-100)
Cat. No. : RP20279
Lot. No. : PE1751807
Theoretical MW : 1674.10
Observed MW : 1674.00

Interface : ESI
Nebulizing Gas Flow : 1.5L/min
CDL Temp : 250°C
Block Temp : 200°C

Interface Bias
Drying Gas Flow
T.Flow
B.conc

: +4.5 kV
: 5 L/min
: 0.2 ml/min
: 50% H₂O/50% MeOH