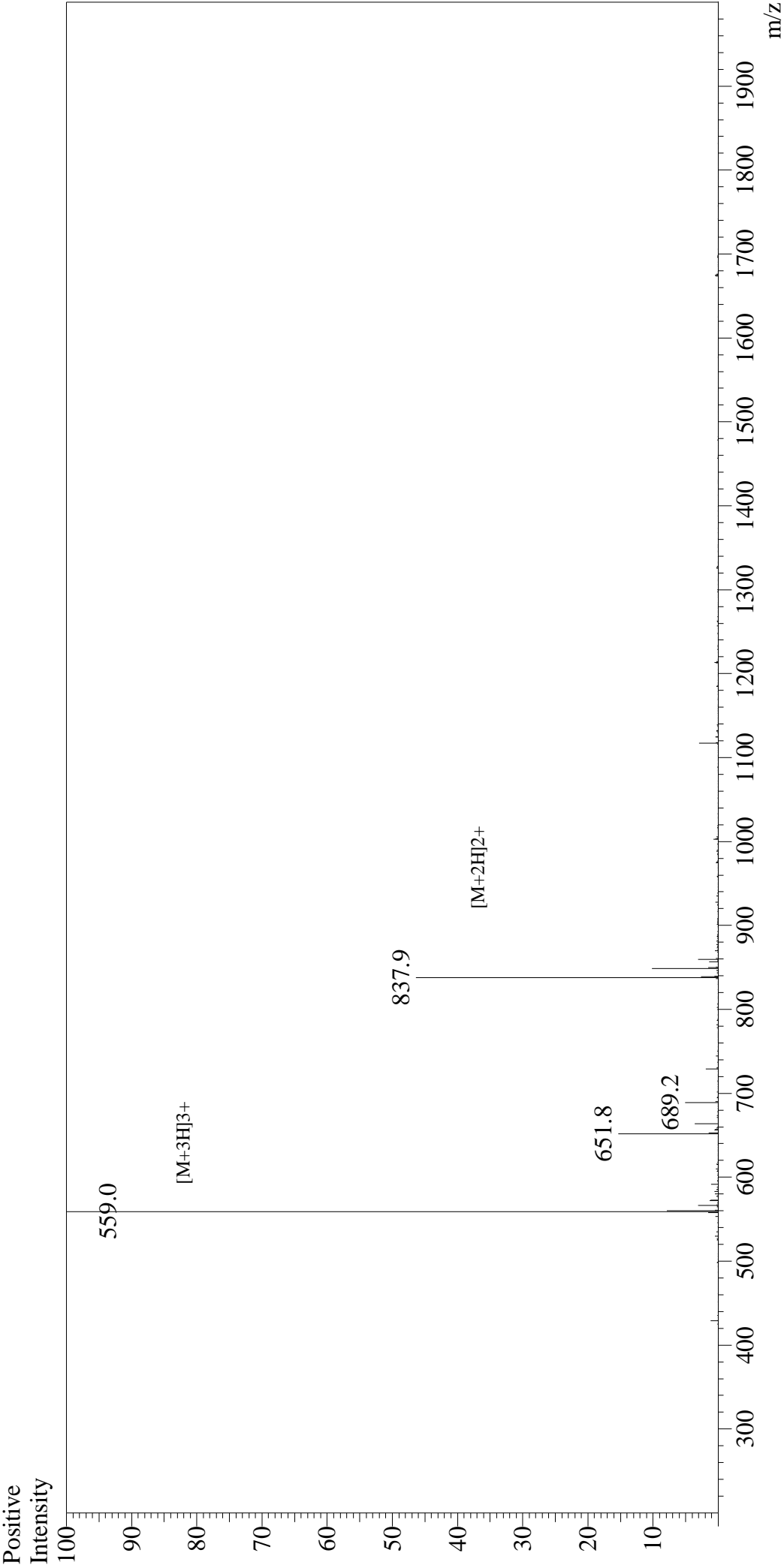


Mass Spectrum



Sample Information

User : Gary
Month-Day Processed : 11/07/18
Time Processed : 20:23:19
Injection Volume : 0.2
Sample Name : CLIP(86-100)
Cat No. : RP20279
Lot No. : PE1791811
Theoretical MW : 1674.10
Observed MW : 1674.0

Interface : ESI
Nebulizing Gas Flow : 1.5L/min
CDL Temp : 250°C
Block Temp : 200°C

Equipment : GK11010007
Interface Bias : +4.5kV
Drying Gas Flow : 5 L/min
T.Flow : 0.2ml/min
B.conc : 50%H₂O/50%MeOH