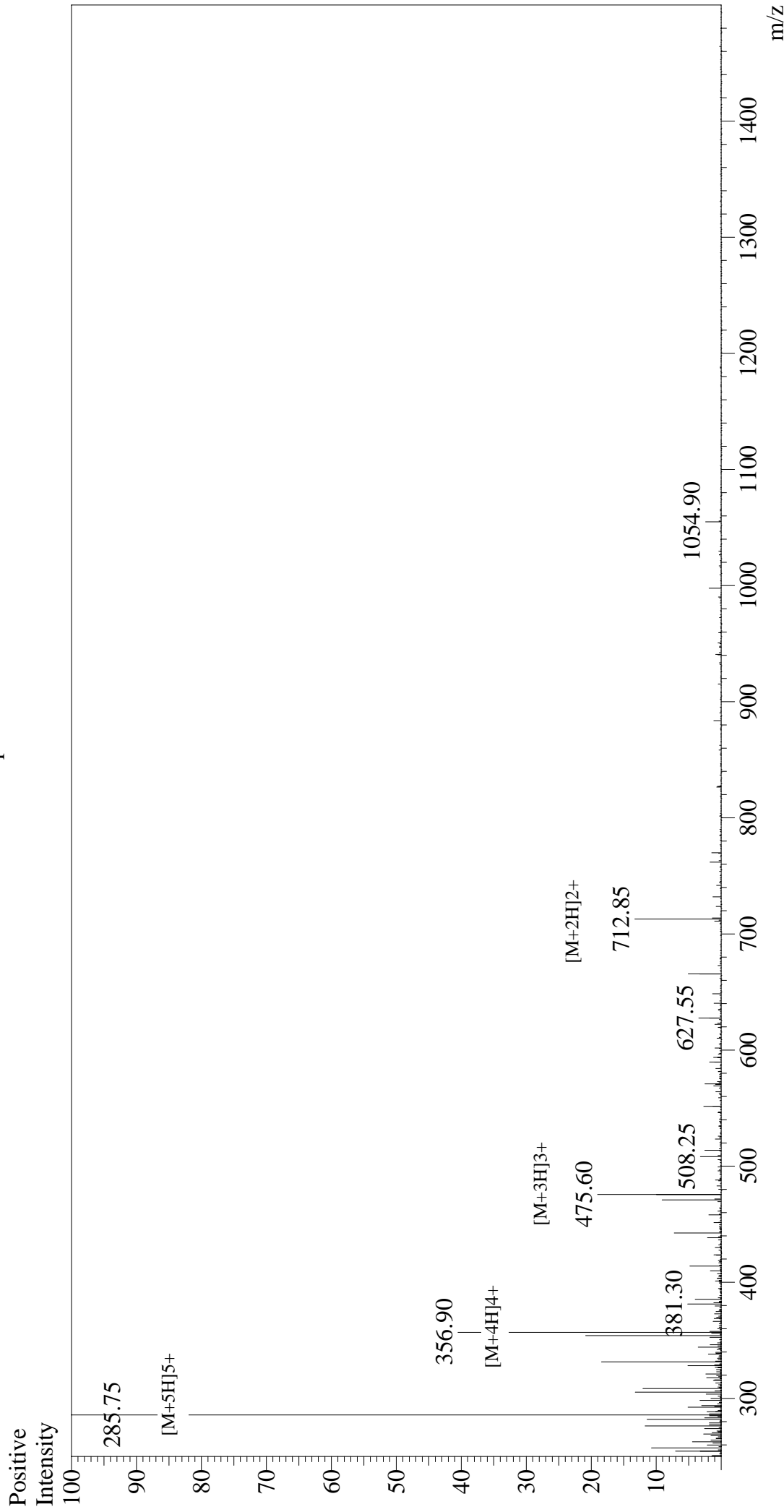


Mass Spectrum



Sample Information

Acquired by : Gary
Month-Day Processed : 10/05/17
Time Processed : 12:34:45
Injection Volume : 0.4
Sample Name : (Arg)9
Sample ID : U3146C1270-1
Theoretical MW : 1423.70
Observed MW : 1423.75

Interface : ESI
Nebulizing Gas Flow : 1.5L/min
CDL Temp : 250°C
Block Temp : 200°C

Interface Bias : +4.5 kV
Drying Gas Flow : 5 L/min
T.Flow : 0.2 ml/min
B.conc : 50% H2O/50% MeOH