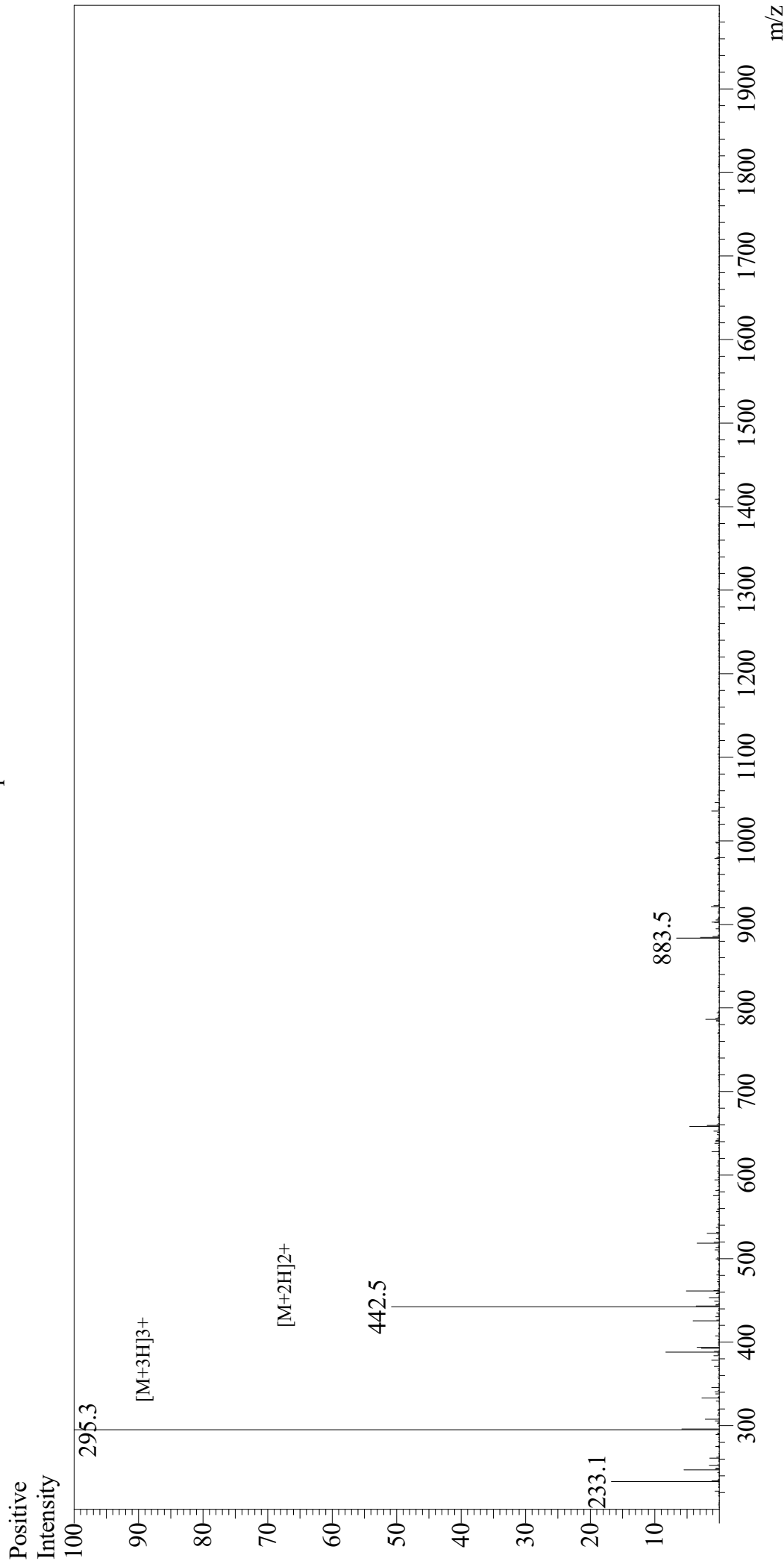


Mass Spectrum



Sample Information

User : Gary

Month-Day Processed : 06/17/20

Time Processed : 08:17:01 PM

Injection Volume : 0.3

Sample Name : Nuclear Localization Signal Peptide

Cat No. : RP20292

Lot No. : E5422120F

Theoretical MW : 883.15

Observed MW : 882.9

Interface : ESI
Nebulizing Gas Flow : 1.5L/min
CDL Temp : 250
Block Temp : 200

Equipment : GK11010007
Interface Bias : +4.5kV
Drying Gas Flow : 5 L/min
T.Flow : 0.2ml/min
B.conc : 50%H2O/50%MeOH