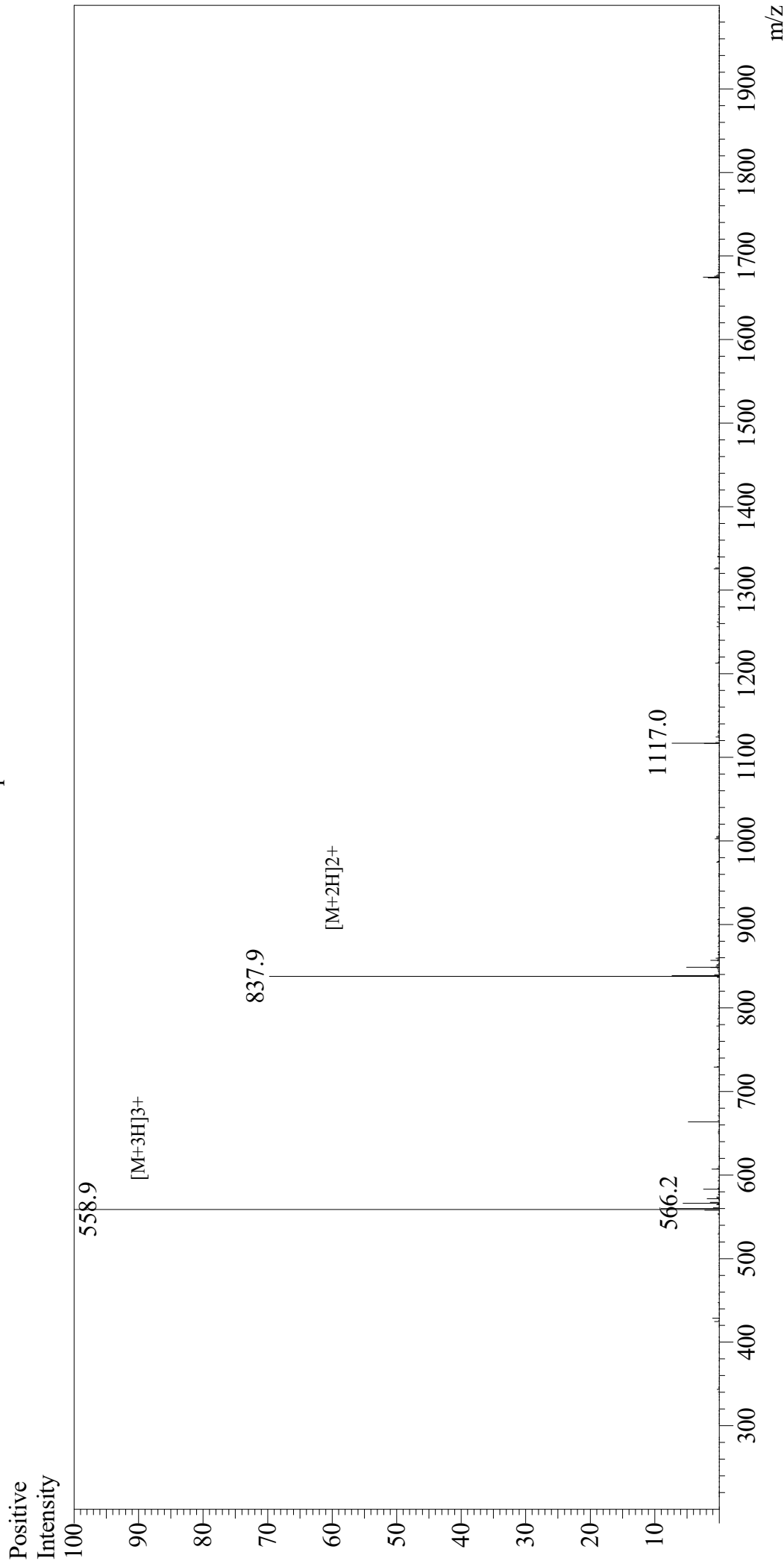


Mass Spectrum



Sample Information

User : Gary
Month-Day Processed : 02/19/20
Time Processed : 04:06:03 PM
Injection Volume : 0.3
Sample Name : CLIP (86-100)
Cat No. : RP20279
Lot No. : E9431520B
Theoretical MW : 1674.10
Observed MW : 1673.7

Interface : ESI
Nebulizing Gas Flow : 1.5L/min
CDL Temp : 250
Block Temp : 200

Equipment : GK11010007
Interface Bias : +4.5kV
Drying Gas Flow : 5 L/min
T.Flow : 0.2ml/min
B.conc : 50%H₂O/50%MeOH