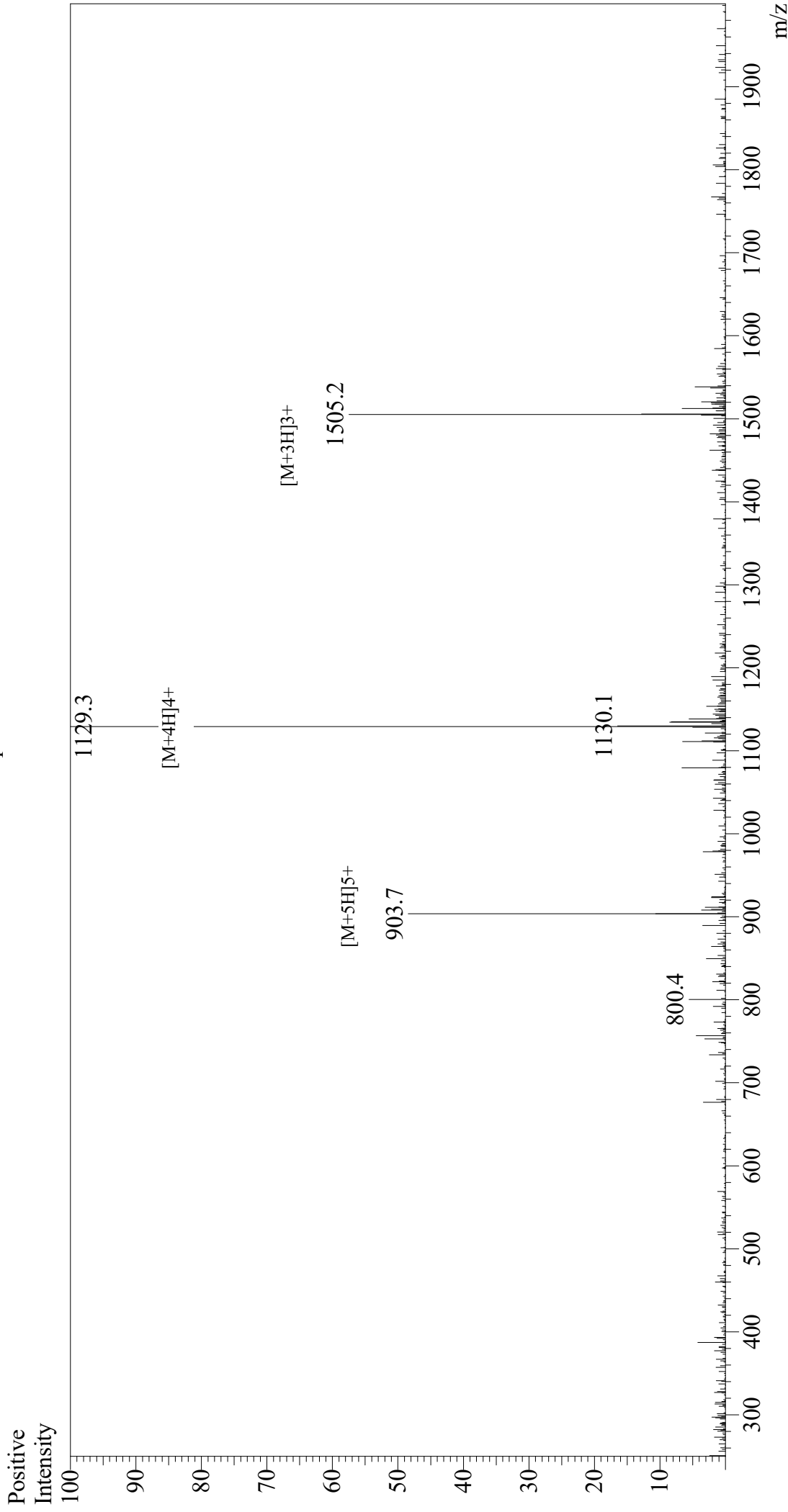


Mass Spectrum



Sample Information	Interface	:ESI
Month-Day Processed :	Nebulizing Gas Flow	:1.5L/min
Time Processed :	CDL Temp	:250
Injection Volume :	Block Temp	:200
Sample Name :		
Cat No. :		
Lot No. :		
Theoretical MW :		
Observed MW :		

Equipment	: GK11010007
Interface Bias	: +3.5 kV
Drying Gas Flow	: 5 L/min
T.Flow	: 0.2 ml/min
B.conc	: 50%H ₂ O/50%MeOH