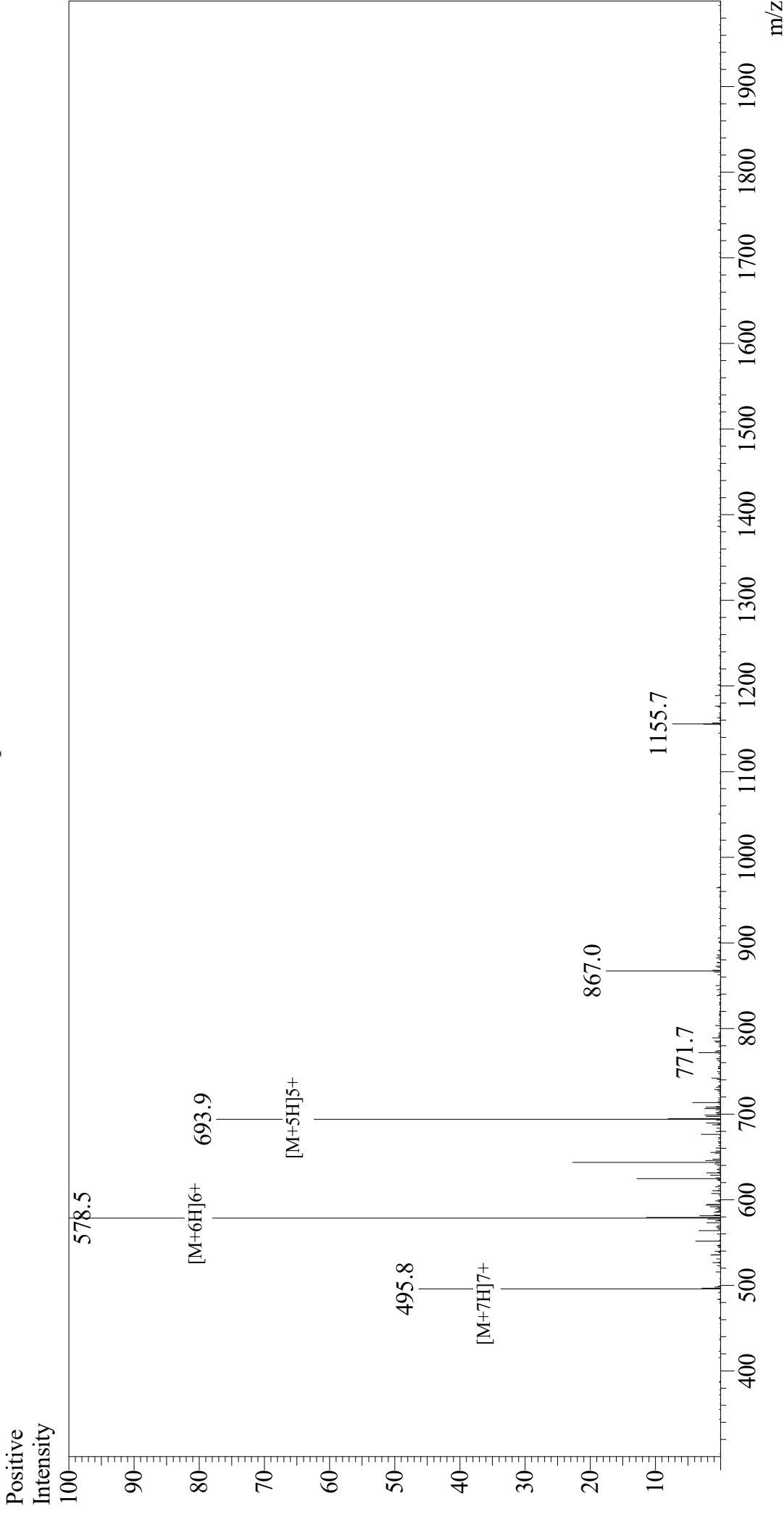


Mass Spectrum



Sample Information

| | | | |
|-----------------------|---|-----------------|-----------------------------------|
| Acquired by : | Gary | Equipment | : GK11010007 |
| Month-Day Processed : | 08/04/19 | Interface Bias | : +4.5 kV |
| Time Processed : | 01:10:35 PM | Drying Gas Flow | : 5 L/min |
| Injection Volume : | 0.3 | T.Flow | : 0.2 ml/min |
| Sample Name : | Brain Natriuretic Peptide (BNP) (1-32), human | B.conc | : 50% H ₂ O / 50% MeOH |
| Cat. No. : | RP11119 | | |
| Lot. No. : | E3316819G | | |
| Theoretical MW : | 3464.10 | | |
| Observed MW : | 3465.0 | | |