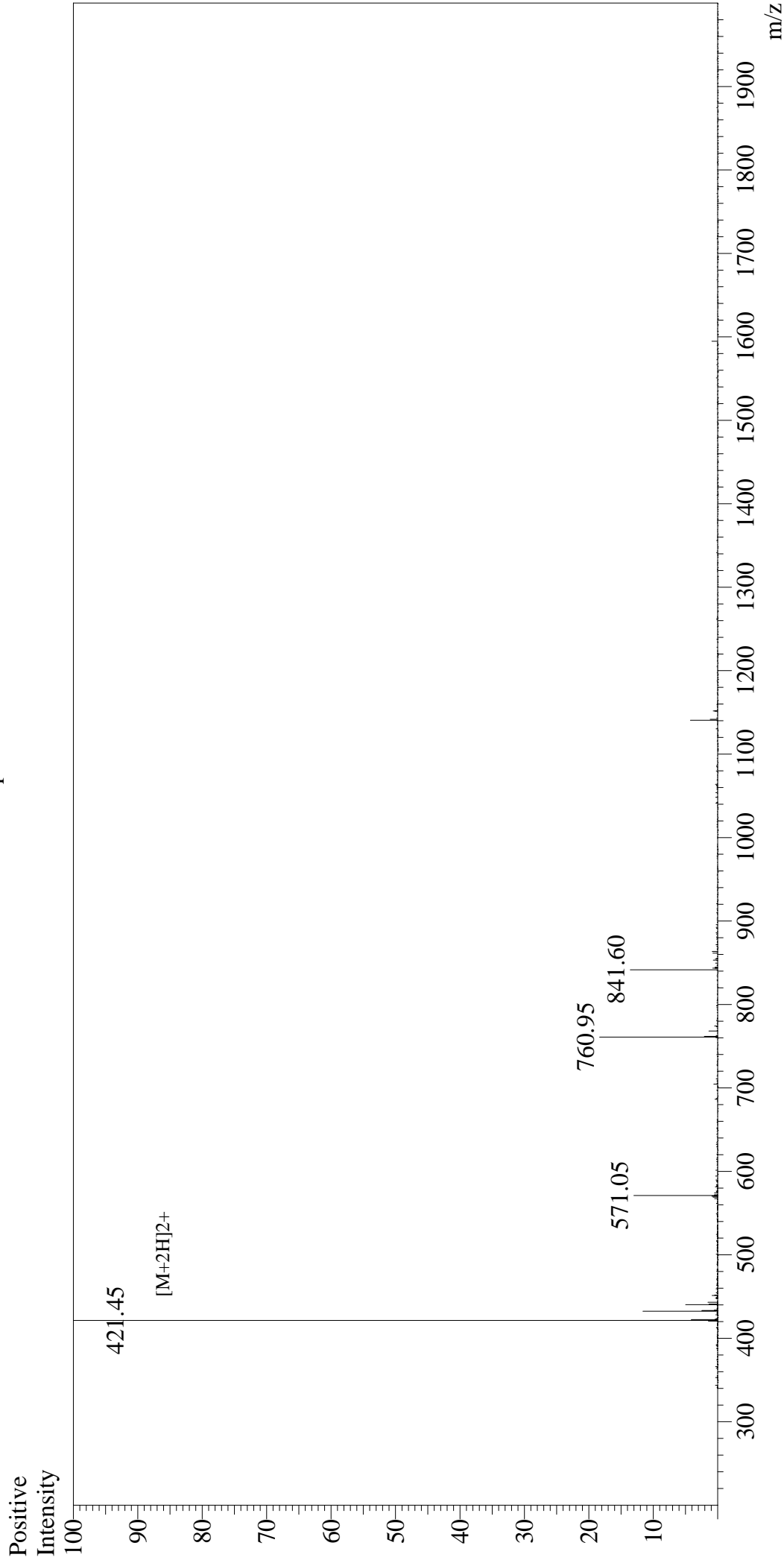


Mass Spectrum



Sample Information

User : Gary
Month-Day Processed : 01/06/18
Time Processed : 12:08:15
Injection Volume : 0.2
Sample Name : Hexa-His
Cat No. : RP11737
Lot No. : PE7681801
Theoretical MW : 840.85
Observed MW : 840.90

Interface : ESI
Nebulizing Gas Flow : 1.5L/min
CDL Temp : 250 °C
Block Temp : 200 °C

Interface Bias : +4.5kV
Drying Gas Flow : 5 L/min
T.Flow : 0.2ml/min
B.conc : 50%H2O/50%MeOH