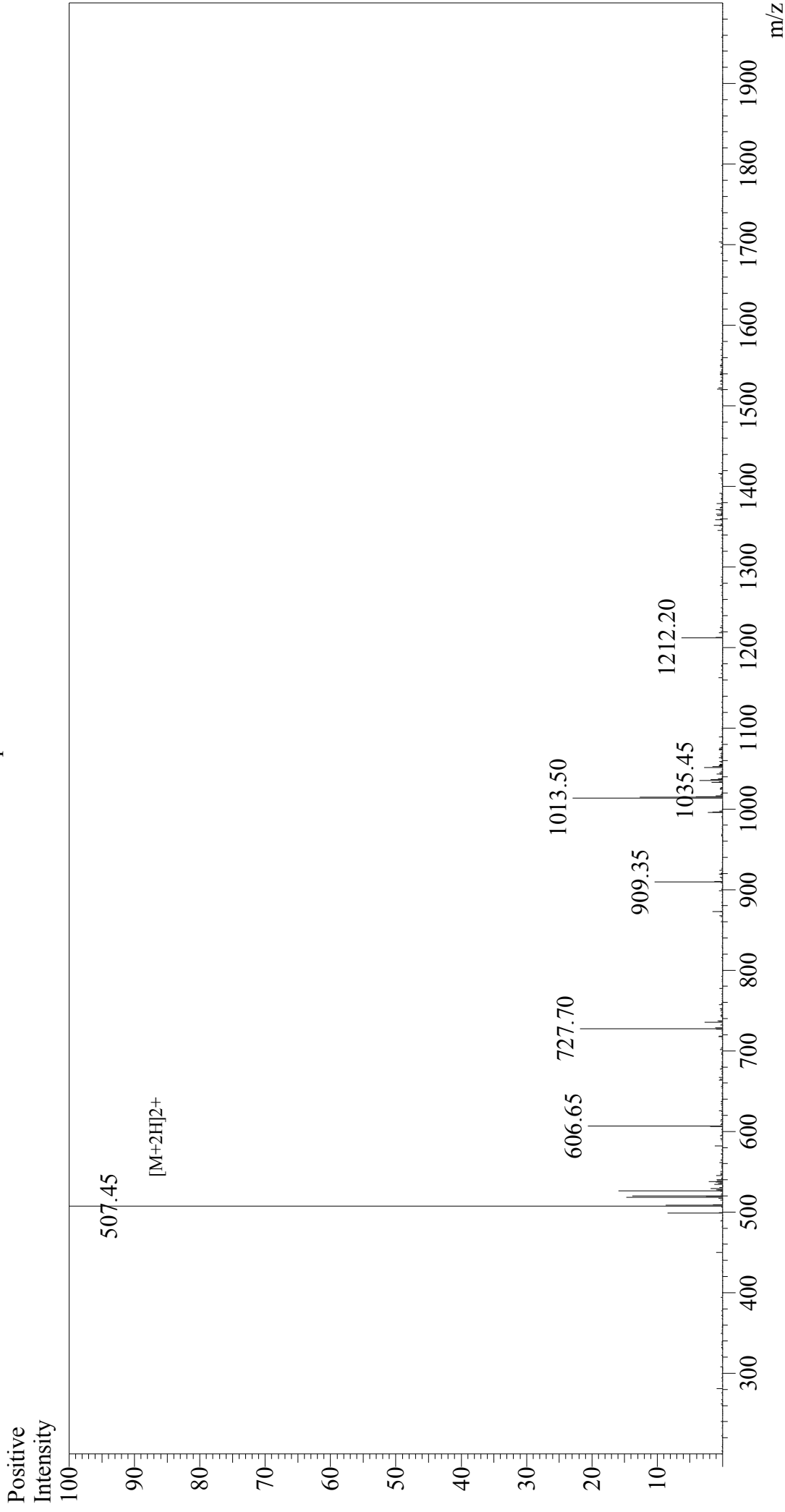


# Mass Spectrum



## Sample Information

Acquired by : Gary  
Month-Day Processed : 03/08/17  
Time Processed : 8:03:56  
Injection Volume : 0.2  
Sample Name : DYKDDDDDK Peptide  
Cat. No. : RP10586  
Lot. No. : PE8831703  
Theoretical MW : 1012.97  
Observed MW : 1012.90

Interface : ESI  
Nebulizing Gas Flow : 1.5L/min  
CDL Temp : 250°C  
Block Temp : 200°C

Interface Bias : +4.5 kV  
Drying Gas Flow : 5 L/min  
T.Flow : 0.2 ml/min  
B.conc : 50%H2O/50%MeOH