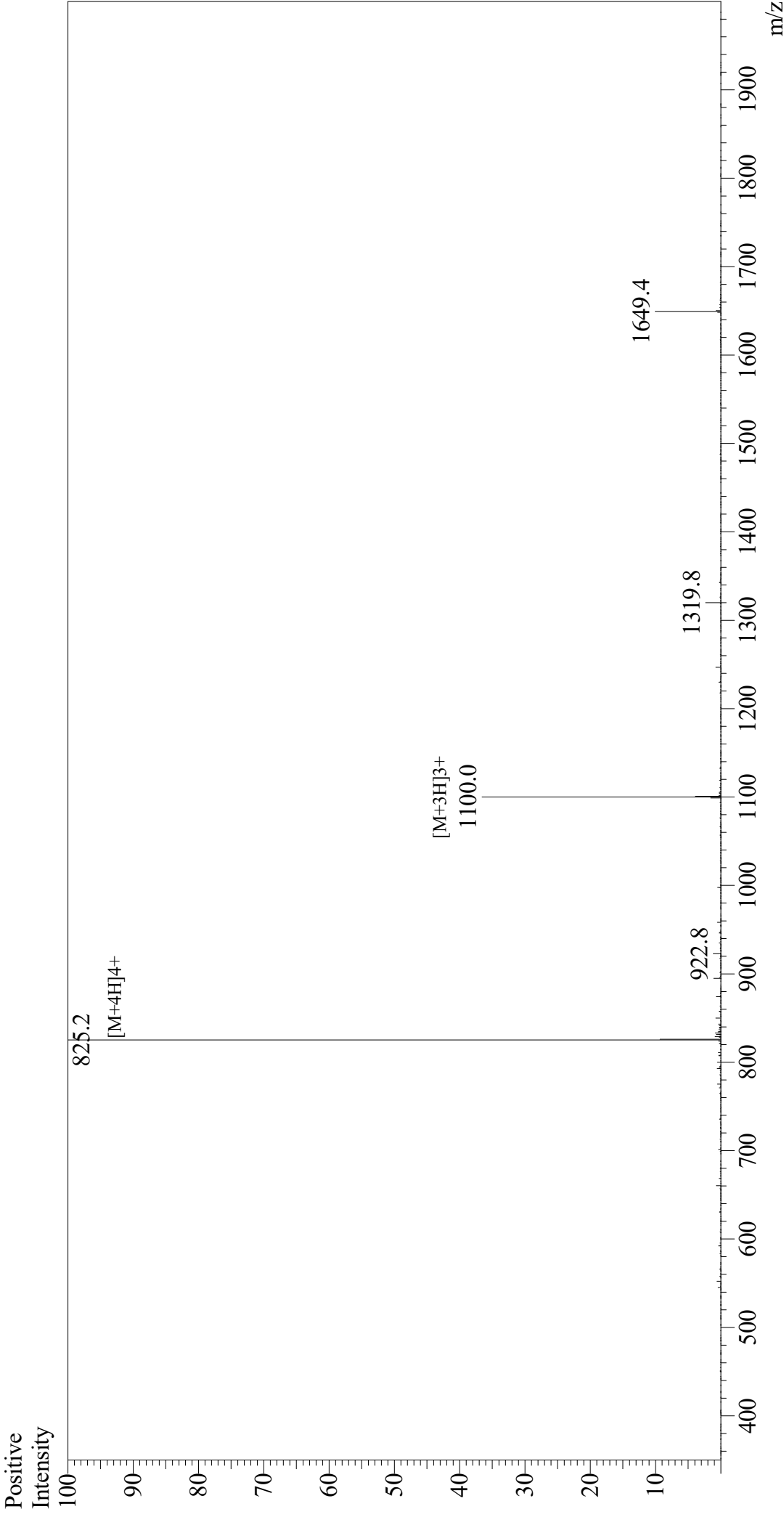


# Mass Spectrum



Sample Information  
Month-Day Processed : 04/13/21  
Time Processed : 9:04:06 PM  
Injection Volume : 0.4  
Sample Name : Glucagon-Like Peptide (GLP) I (7-36), amide, human  
Cat. No. : RP10773  
Lot. No. : E3014721D  
Theoretical MW : 3297.50  
Observed MW : 3296.8

Interface : ESI  
Nebulizing Gas Flow : 1.5L/min  
CDL Temp : 250  
Block Temp : 200

Equipment : GK11010007  
Interface Bias : +4.5 kV  
Drying Gas Flow : 5 L/min  
T.Flow : 0.2 ml/min  
B.conc : 50% H2O/50% MeOH