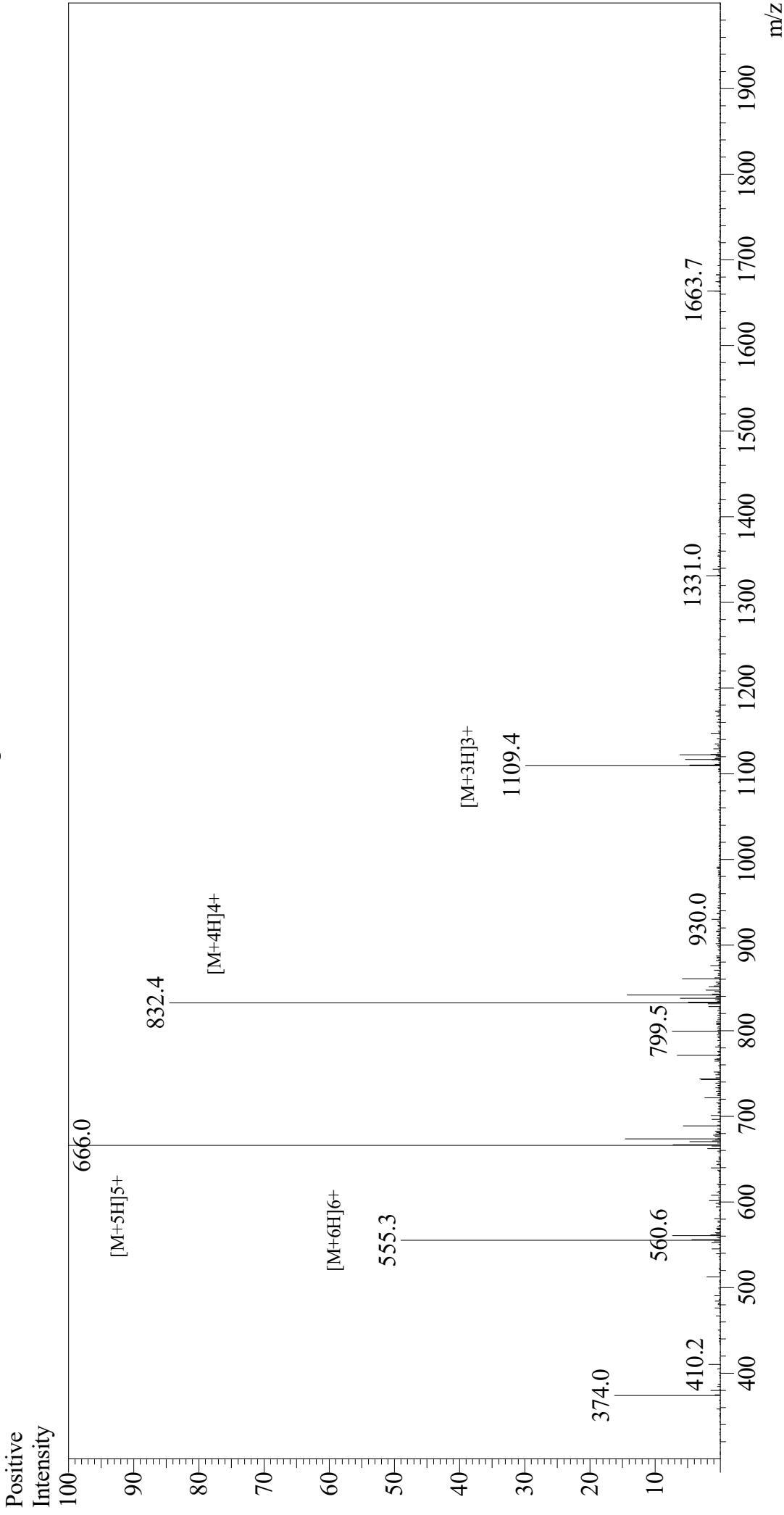


Mass Spectrum



Sample Information
 Month-Day Processed : 08/31/20
 Time Processed : 10:41:37 PM
 Injection Volume : 0.3
 Sample Name : VIP, human, ovine, porcine, rat
 Cat No. : RP11110
 Lot No. : E38669201
 Theoretical MW : 3325.80
 Observed MW : 3325.0

Interface : ESI
 Nebulizing Gas Flow : 1.5L/min
 CDL Temp : 250
 Block Temp : 200

Equipment : GK11010007
 Interface Bias : +4.5 kV
 Drying Gas Flow : 5 L/min
 T.Flow : 0.2 ml/min
 B.conc : 50% H2O/50% MeOH