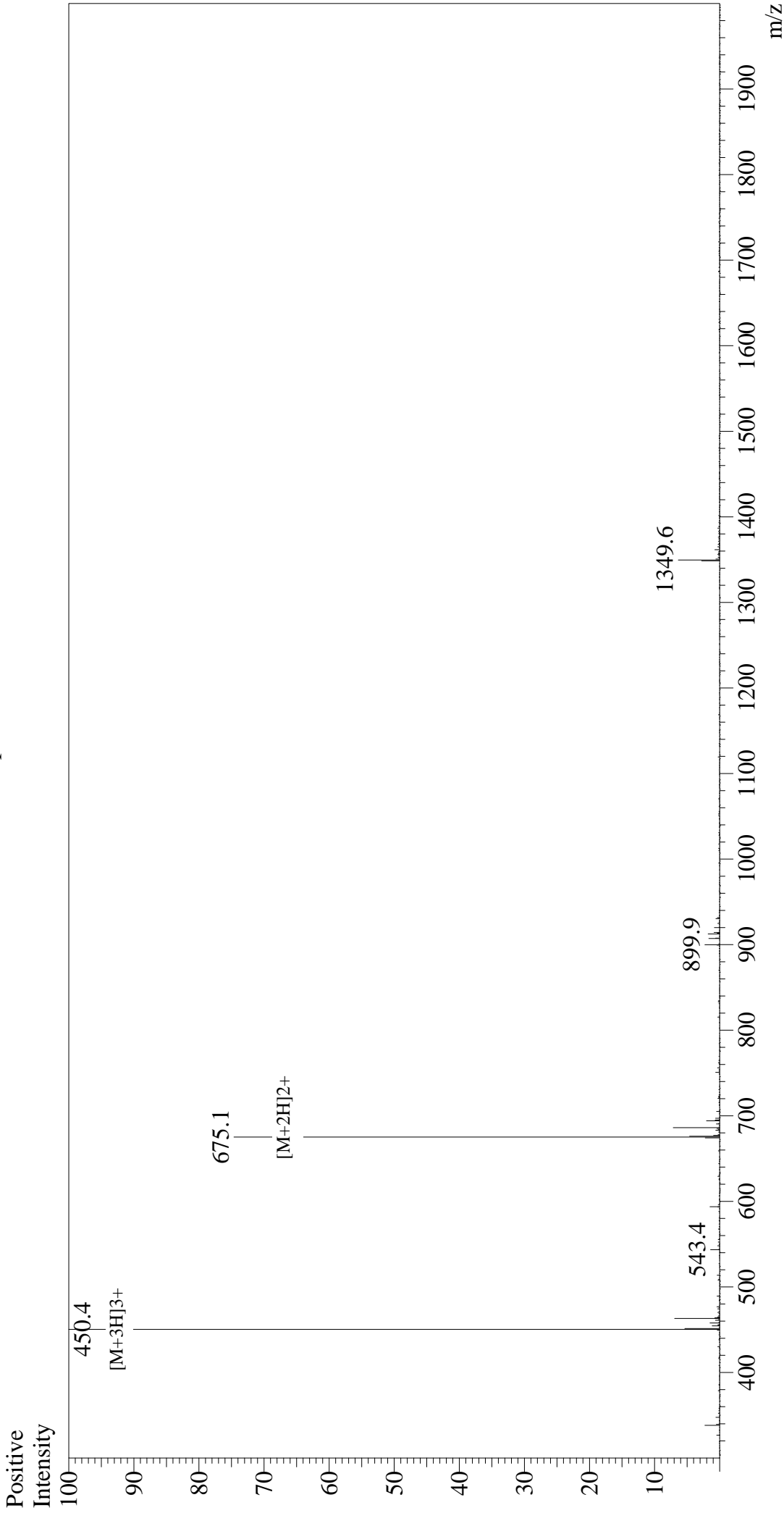


Mass Spectrum



Sample Information

Acquired by : Gary
Month-Day Processed : 11/19/19
Time Processed : 21:45:21
Injection Volume : 0.3
Sample Name : BDC2.5 mimotope 1040-31
Cat. No. : RP20518
Lot. No. : E0967319K
Theoretical MW : 1348.60
Observed MW : 1348.2

Interface : ESI
Nebulizing Gas Flow : 1.5L/min
CDL Temp : 250
Block Temp : 200

Equipment : GK11010007
Interface Bias : +4.5 kV
Drying Gas Flow : 5 L/min
T.Flow : 0.2 ml/min
B.conc : 50% H2O/50% MeOH