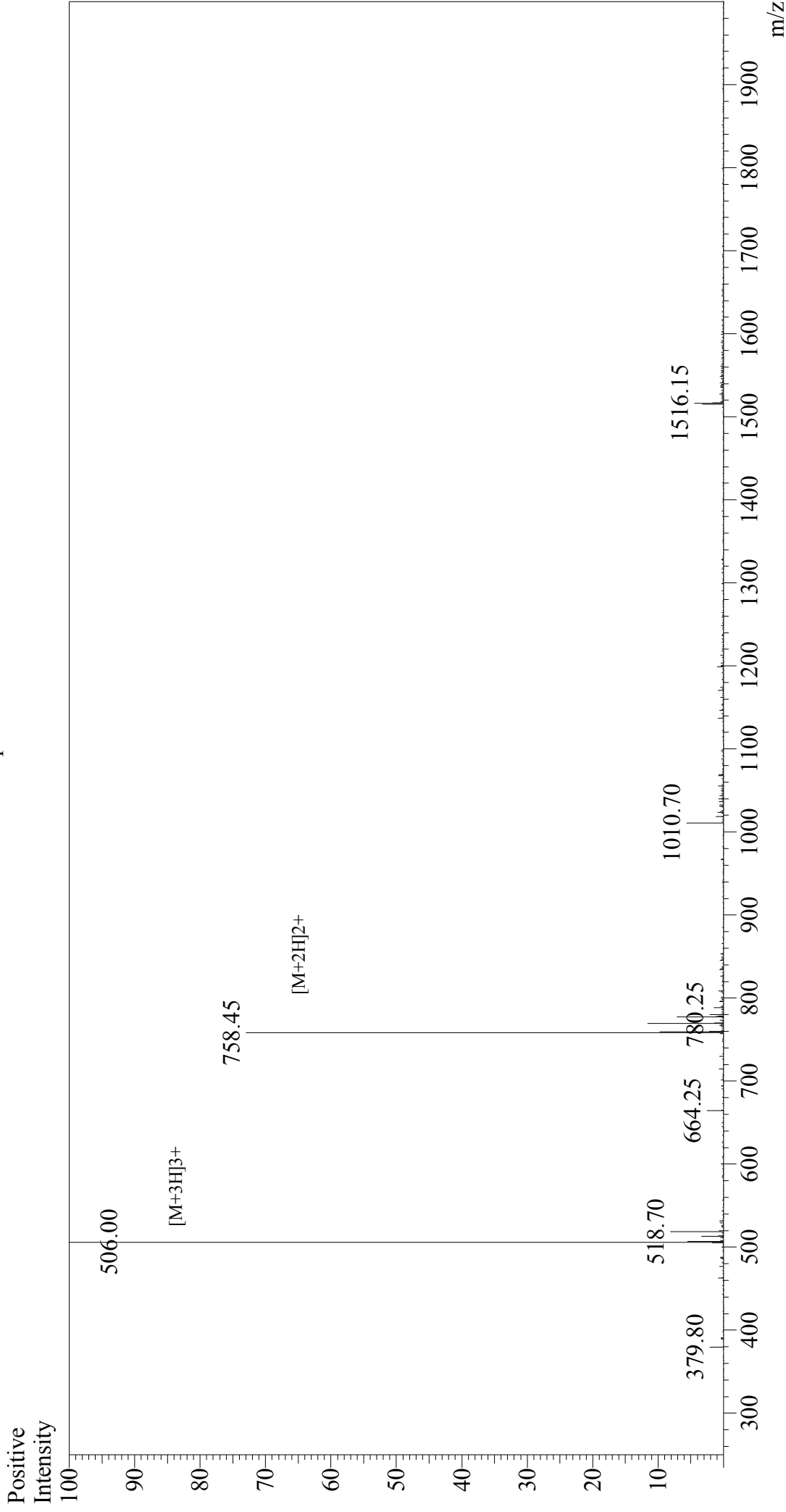


# Mass Spectrum



## Sample Information

Acquired by : Gary  
Month-Day Processed : 03/09/18  
Time Processed : 11:30:58  
Injection Volume : 0.2  
Sample Name : AxIride  
Cat. No. : RP20363  
Lot. No. : PE8121803  
Theoretical MW : 1514.78  
Observed MW : 1515.00

Interface : ESI  
Nebulizing Gas Flow : 1.5L/min  
CDL Temp : 250°C  
Block Temp : 200°C

Interface Bias : +4.5 kV  
Drying Gas Flow : 5 L/min  
T.Flow : 0.2 ml/min  
B.conc : 50% $\text{H}_2\text{O}$ /50% $\text{MeOH}$