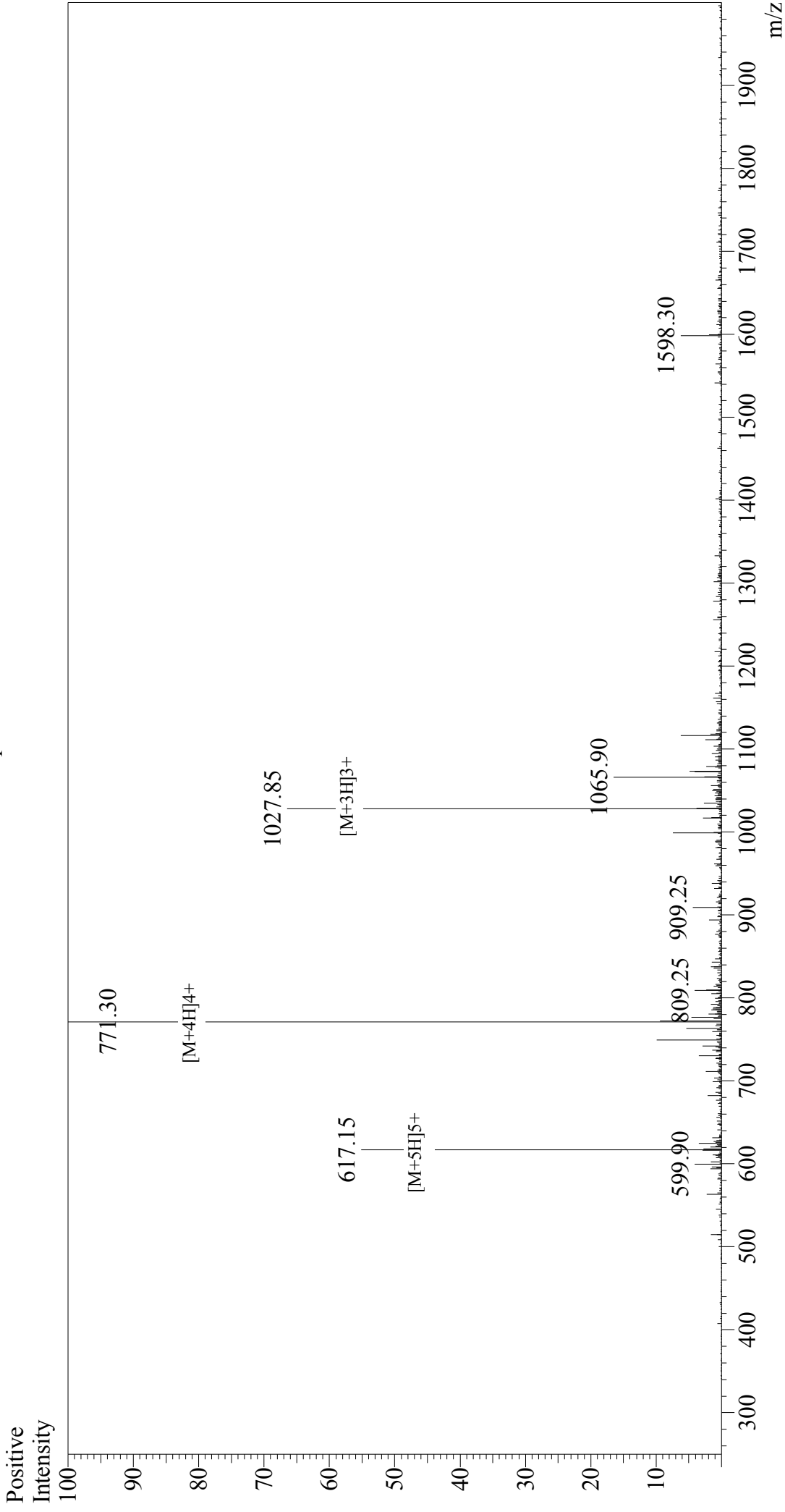


Mass Spectrum



Sample Information

Acquired by : Gary
 Month-Day Processed : 01/09/18
 Time Processed : 0:30:29
 Injection Volume : 0.2
 Sample Name : Atrial Natriuretic Peptide (ANP) (1-28), human, porcine
 Cat. No. : RP11927
 Lot. No. : PE4651712
 Theoretical MW : 3080.50
 Observed MW : 3081.20

Interface : ESI
 Nebulizing Gas Flow : 1.5L/min
 CDL Temp : 250°C
 Block Temp : 200°C

Interface Bias : +4.5 kV
 Drying Gas Flow : 5 L/min
 T.Flow : 0.2 ml/min
 B.conc : 50% H₂O/50% MeOH