

Sample Name :OVA Peptide (257-264)
 Sample ID :U2480EG170-1
 Time Processed : 9:02:01
 Month-Day-Year Processed :07/21/2019

Pump A : 0.065% trifluoroacetic in 100% water (v/v)
 Pump B : 0.05% trifluoroacetic in 100% acetonitrile (v/v)
 Total Flow:1 ml/min
 Wavelength:220 nm

| Time | Unit | Command | Value | Comment |
|-------|------------|---------------|-------|---------|
| 0.01 | Pumps | Pump A B.Conc | 5 | |
| 25.00 | Pumps | Pump A B.Conc | 65 | |
| 25.01 | Pumps | Pump A B.Conc | 95 | |
| 27.00 | Pumps | Pump A B.Conc | 95 | |
| 27.01 | Pumps | Pump A B.Conc | 5 | |
| 35.00 | Pumps | Pump A B.Conc | 5 | |
| 35.01 | Controller | Stop | | |

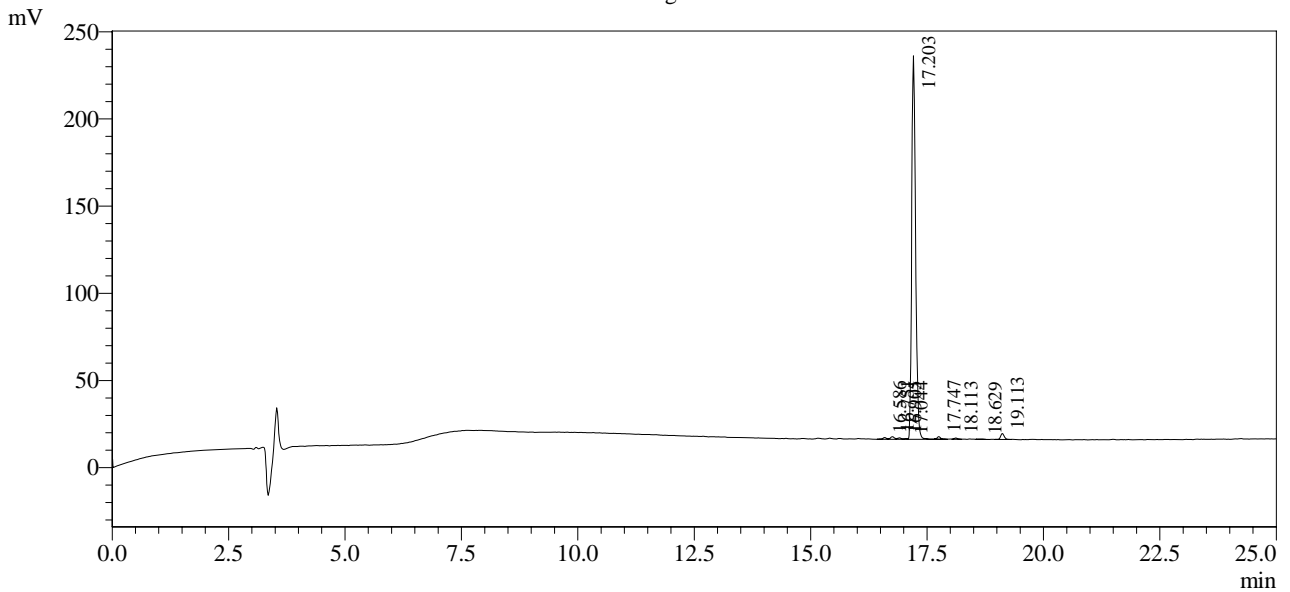
<<Column Performance>>

<Detector A>

Column : Inertsil ODS-3 4.6 x 250 mm

Equipment:SS-CM-0286

Chromatogram



1 Det.A Ch1 / 220nm

Peak Table

Detector A Ch1 220nm

| Peak# | Ret. Time | Area | Height | Area % |
|-------|-----------|---------|--------|---------|
| 1 | 16.586 | 6008 | 995 | 0.449 |
| 2 | 16.751 | 8841 | 1482 | 0.661 |
| 3 | 16.905 | 4858 | 850 | 0.363 |
| 4 | 17.044 | 1952 | 413 | 0.146 |
| 5 | 17.203 | 1282560 | 219892 | 95.903 |
| 6 | 17.747 | 7863 | 1524 | 0.588 |
| 7 | 18.113 | 4449 | 715 | 0.333 |
| 8 | 18.629 | 1891 | 252 | 0.141 |
| 9 | 19.113 | 18935 | 3409 | 1.416 |
| Total | | 1337357 | 229533 | 100.000 |