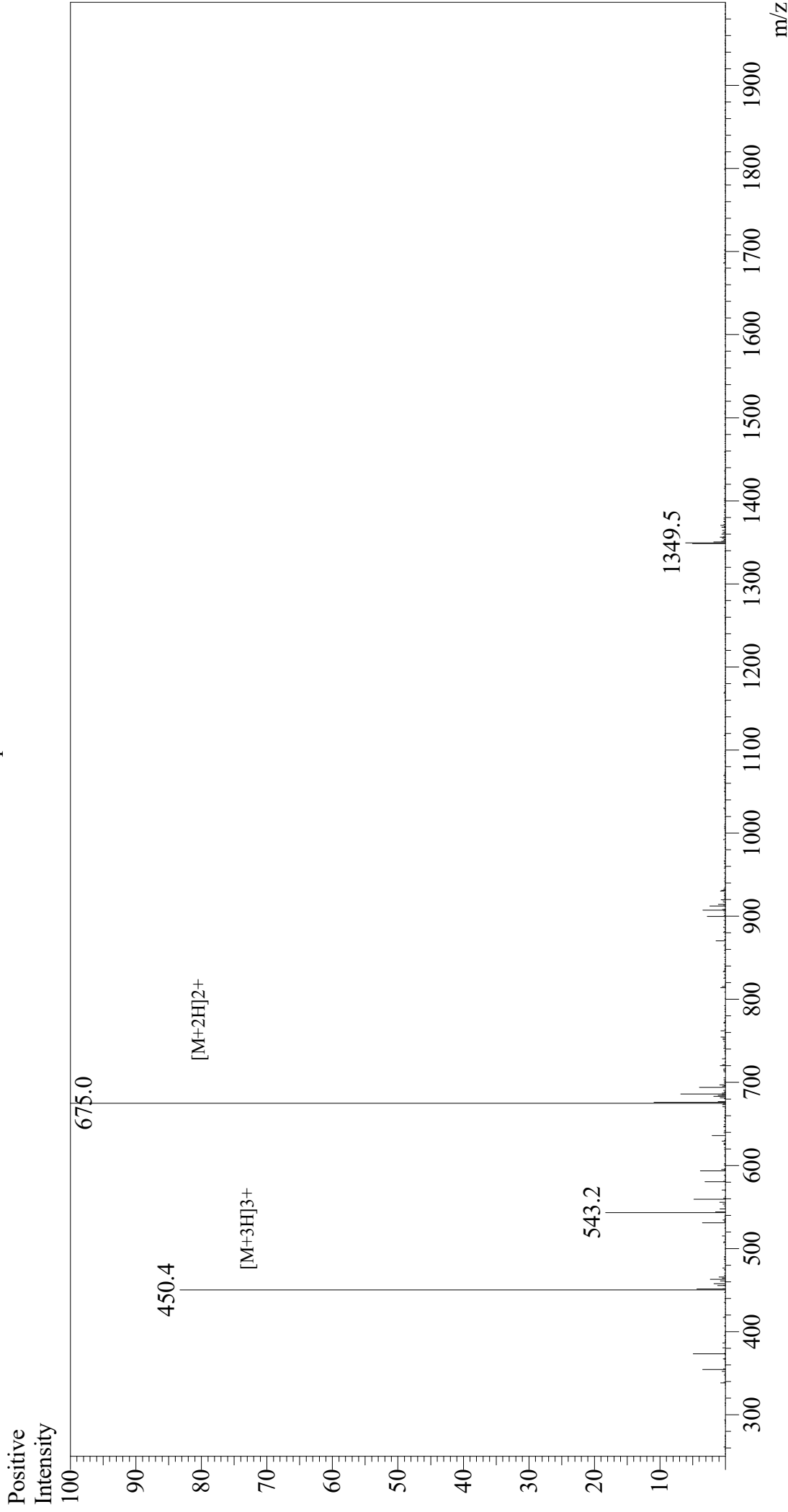


Mass Spectrum



Sample Information

Month-Day Processed : 11/25/20
Time Processed : 02:35:45 PM
Injection Volume : 0.4
Sample Name : BDC2.5 mimotope 1040-31
Cat No. : RP20518
Lot No. : E5877920K
Theoretical MW : 1348.60
Observed MW : 1348.0

Interface : ESI
Nebulizing Gas Flow : 1.5L/min
CDL Temp : 250
Block Temp : 200

Equipment : GK11010007
Interface Bias : +3.5 kV
Drying Gas Flow : 5 L/min
T.Flow : 0.2 ml/min
B.conc : 50%H2O/50%MeOH