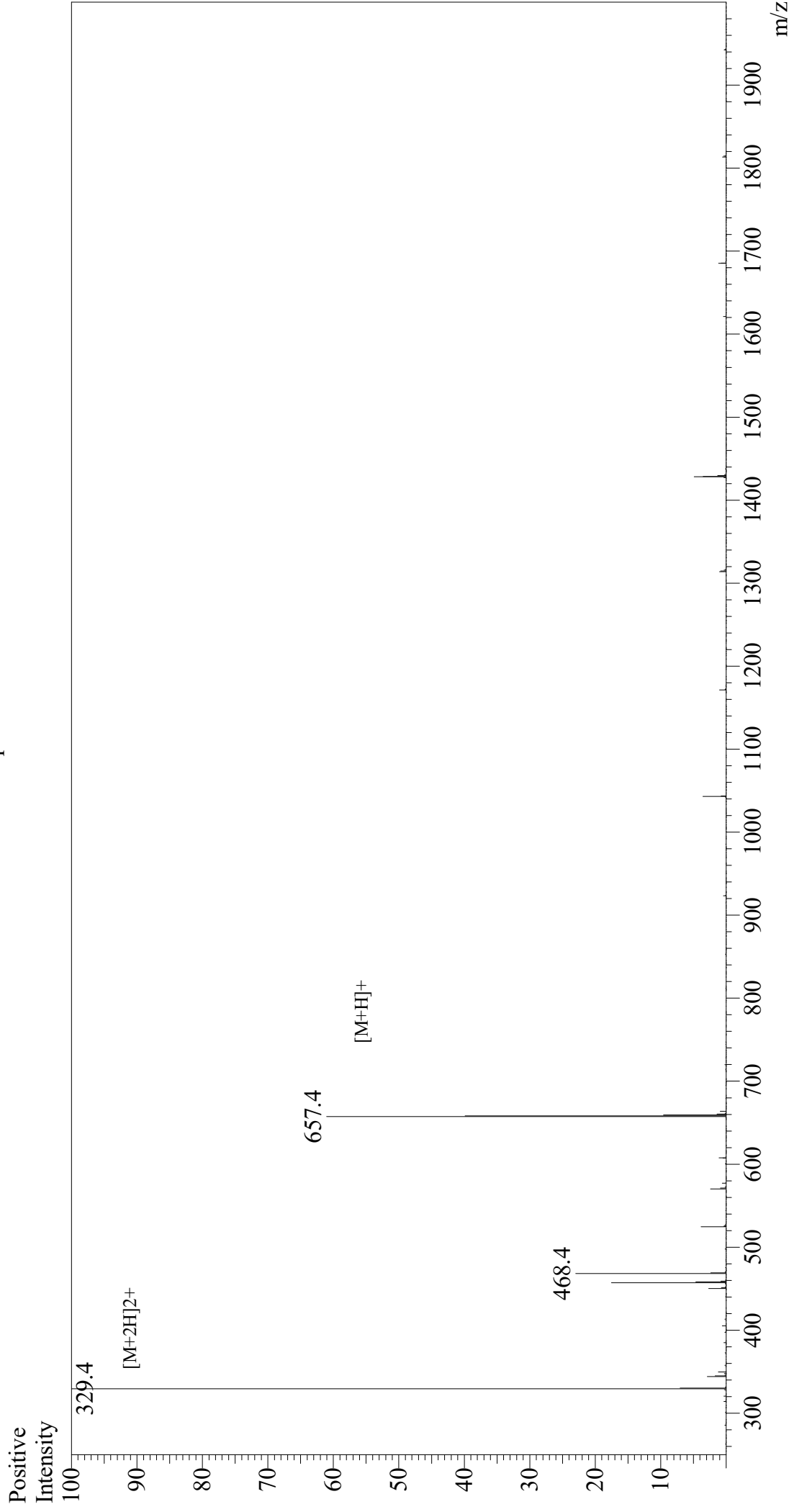


Mass Spectrum



Sample Information
Month-Day Processed : 03/14/21
Time Processed : 12:34:24 AM
Injection Volume : 0.5
Sample Name : Protease-Activated Receptor-2 Activating Peptide
Cat No. : RP19975
Lot No. : E8098321C
Theoretical MW : 656.83
Observed MW : 656.8

Interface : ESI
Nebulizing Gas Flow : 1.5L/min
CDL Temp : 250
Block Temp : 200

Equipment : GK11010007
Interface Bias : +3.5 kV
Drying Gas Flow : 5 L/min
T.Flow : 0.2 ml/min
B.conc : 50%H2O/50%MeOH