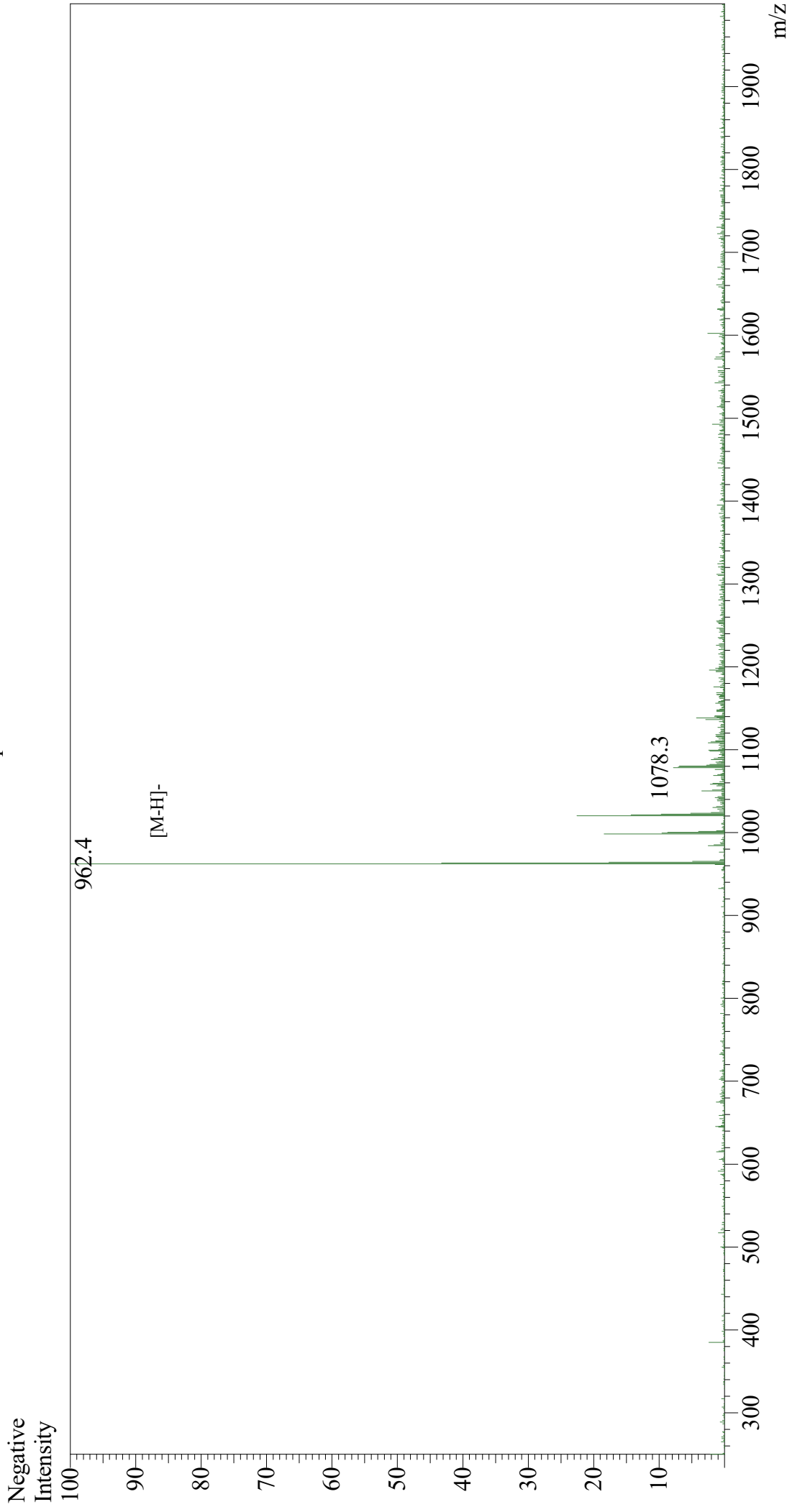


Mass Spectrum



Sample Information

User : Gary
Month-Day Processed : 09/19/19
Time Processed : 08:57:07 AM
Injection Volume : 0.3
Sample Name : Carcinoembryonic Antigen (CEA)
Cat No. : RP20328
Lot No. : E4915319I
Theoretical MW : 964.10
Observed MW : 963.4

Interface : ESI
Nebulizing Gas Flow : 1.5L/min
CDL Temp : 250
Block Temp : 200

Equipment : GK11010007
Interface Bias : -3.5 kV
Drying Gas Flow : 5 L/min
T.Flow : 0.2 ml/min
B.conc : 50%H2O/50%MeOH