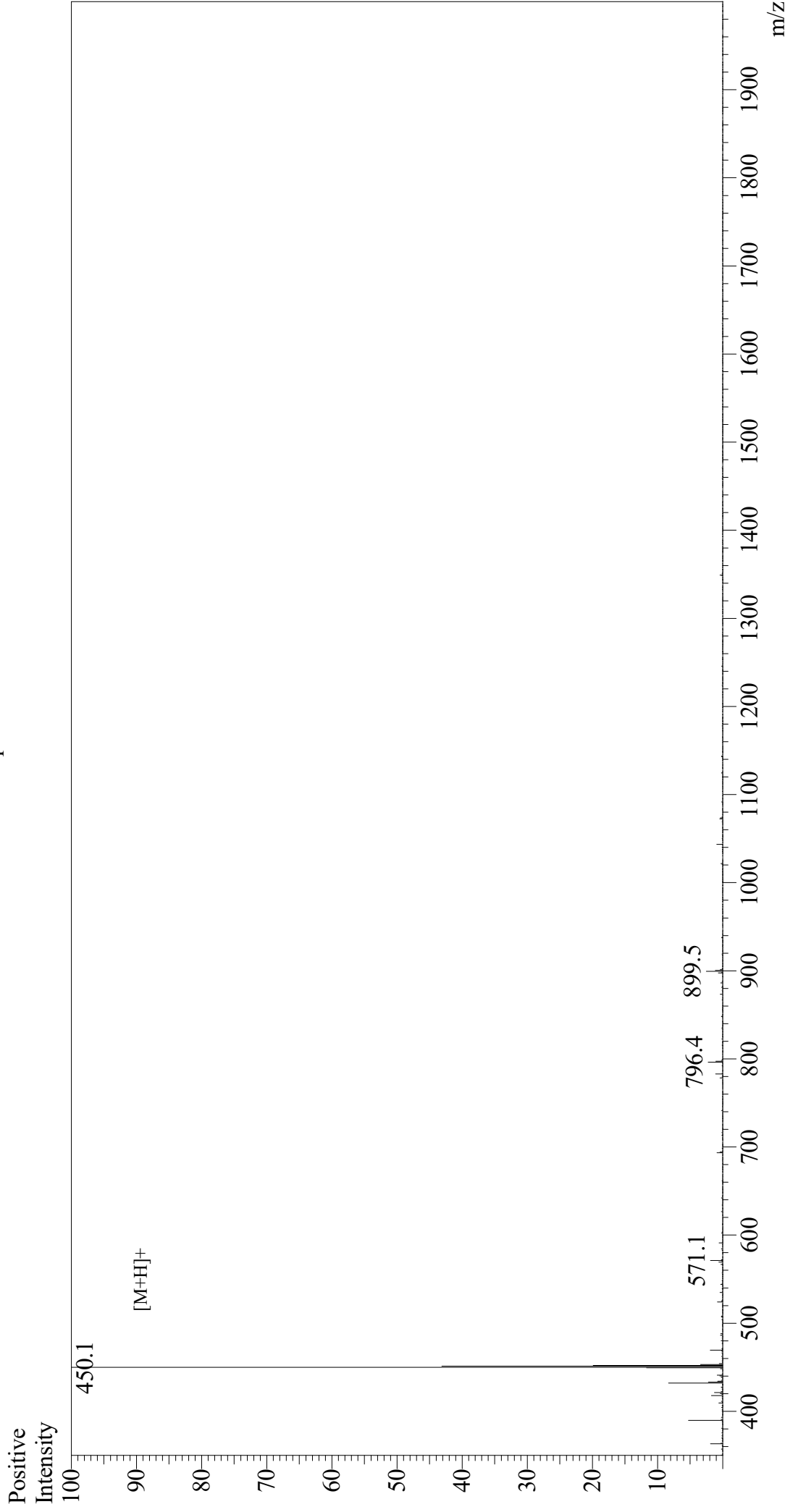


Mass Spectrum



Sample Information

Month-Day Processed :	05/24/21	Equipment	: GK11010007
Time Processed :	9:53:20	Interface Bias	: +4.5 kV
Injection Volume :	0.2	Drying Gas Flow	: 5 L/min
Sample Name :	Arg-Gly-Asp-Cys	T.Flow	: 0.2 ml/min
Cat. No. :	RP10860	B.conc	: 50%H2O/50%MeOH
Lot. No. :	E0661221E		
Theoretical MW :	449.48		
Observed MW :	449.1		