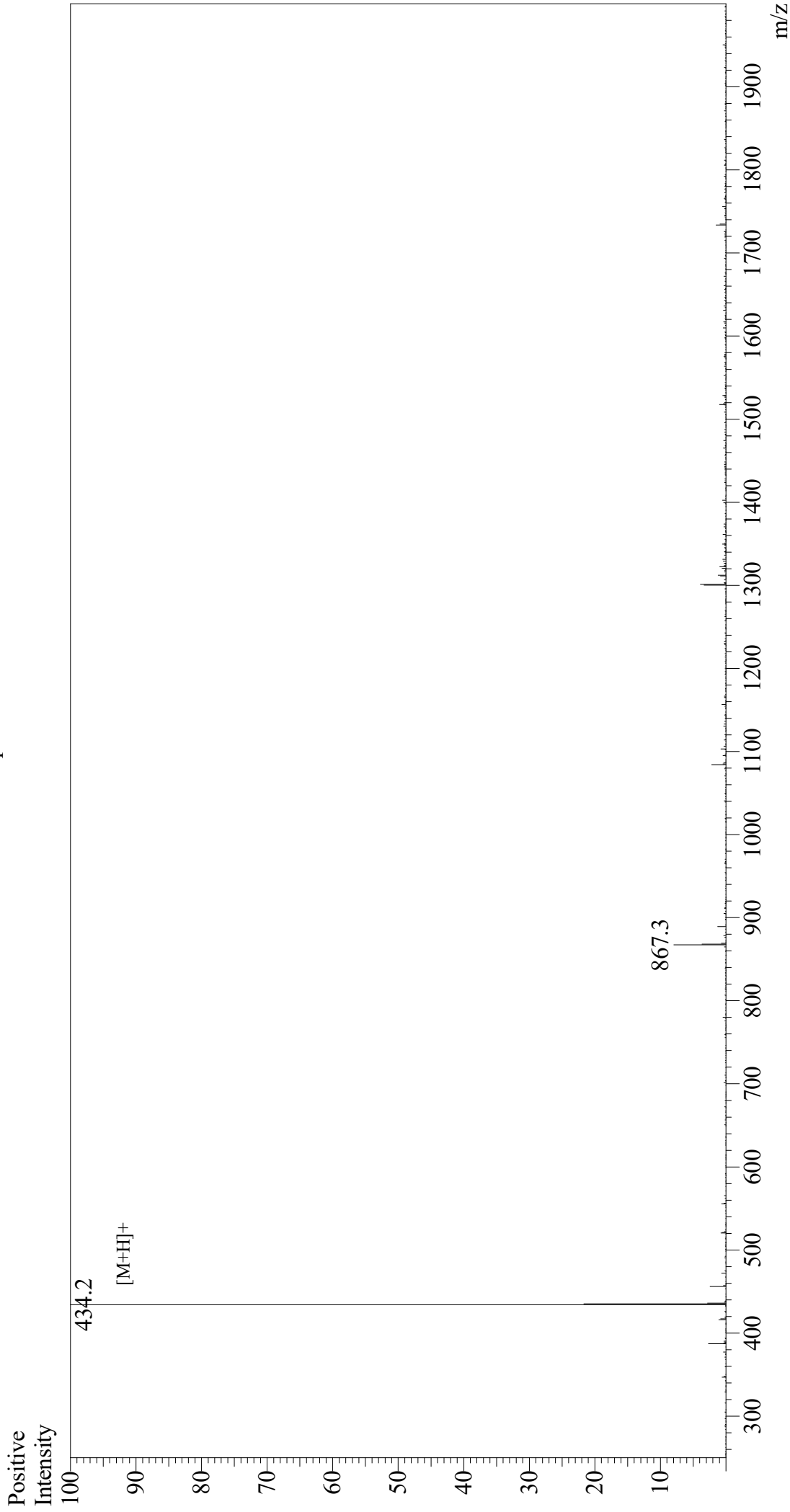


Mass Spectrum



Sample Information
Month-Day Processed : 01/26/21
Time Processed : 7:22:11 PM
Injection Volume : 0.4
Sample Name : Arg-Gly-Asp-Ser
Cat No. : RP10861
Lot No. : E063521A
Theoretical MW : 433.42
Observed MW : 433.2

Interface : ESI
Nebulizing Gas Flow : 1.5L/min
CDL Temp : 250
Block Temp : 200

Equipment : GK11010007
Interface Bias : +3.5 kV
Drying Gas Flow : 5 L/min
T.Flow : 0.2 ml/min
B.conc : 50%H2O/50%MeOH