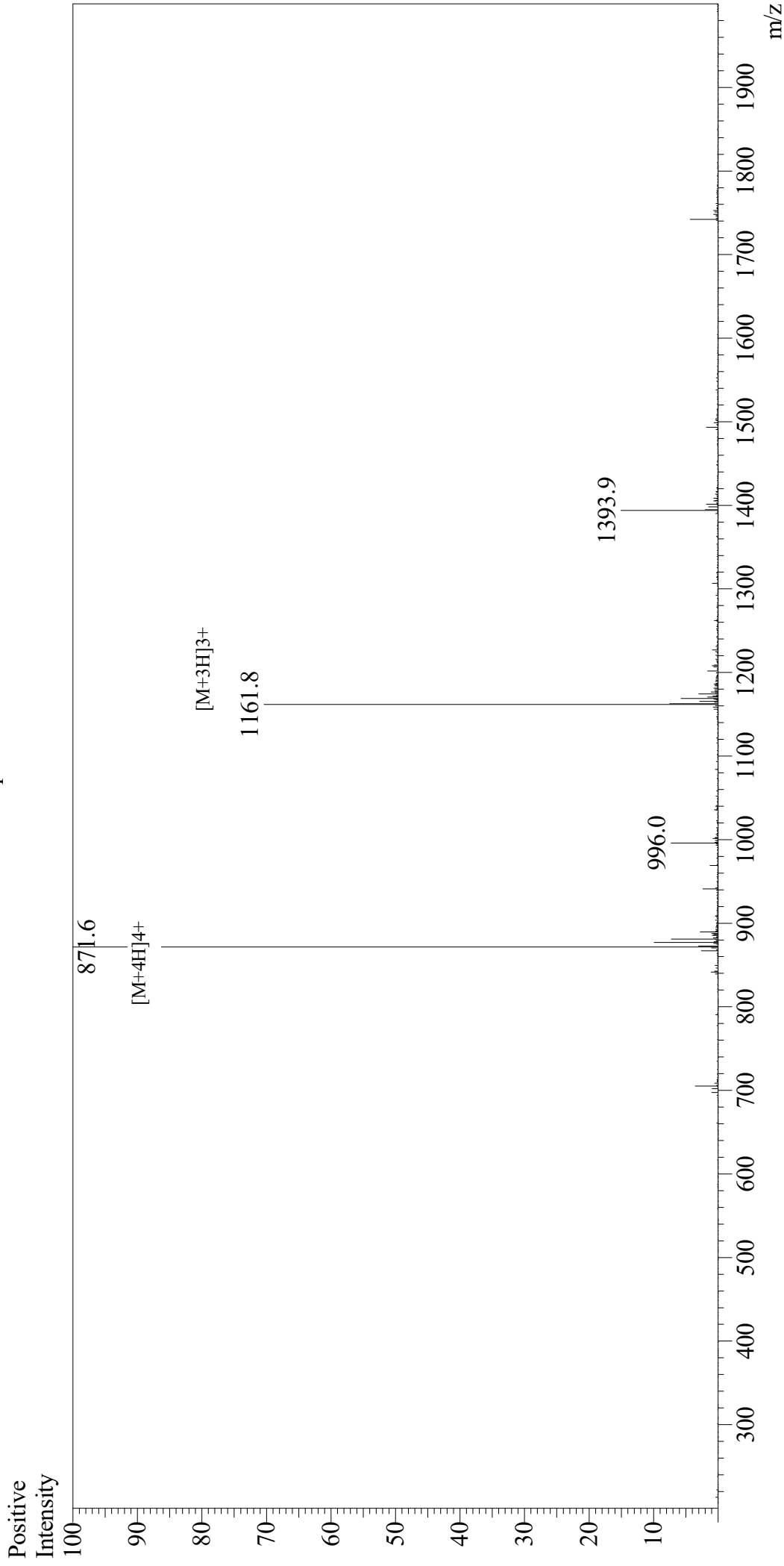


Mass Spectrum



Sample Information

User : Gary
Month-Day Processed : 11/23/18
Time Processed : 04:48:35 PM
Injection Volume : 0.1
Sample Name : Glucagon (1-29), Human
Cat No. : RP10772
Lot No. : PE6861811
Theoretical MW : 3482.80
Observed MW : 3482.4

Interface

Interface : ESI
Nebulizing Gas Flow : 1.5L/min
CDL Temp : 250
Block Temp : 200

Equipment

Equipment : GK11010007
Interface Bias : +4.5kV
Drying Gas Flow : 5 L/min
T.Flow : 0.2ml/min
B.conc : 50%H2O/50%MeOH