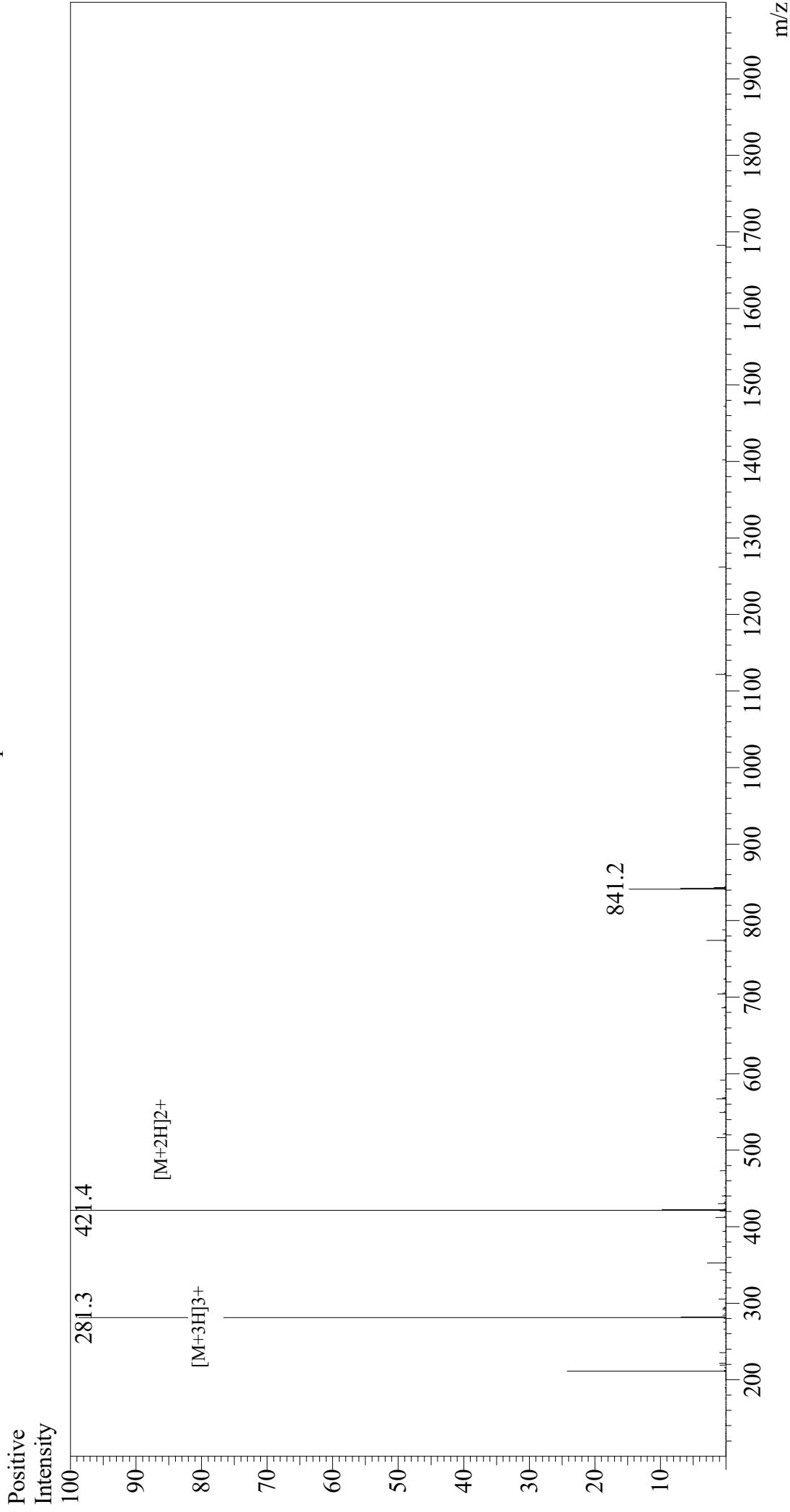


Mass Spectrum



Sample Information

Month-Day Processed : 01/16/21
Time Processed : 8:27:07 AM
Injection Volume : 0.3
Sample Name : Hexa-His
Cat No. : RP111737
Lot No. : E7095921A
Theoretical MW : 840.85
Observed MW : 840.8

Interface : ESI
Nebulizing Gas Flow : 1.5L/min
CDL Temp : 250
Block Temp : 200

Equipment : GK11010007
Interface Bias : +3.5 kV
Drying Gas Flow : 5 L/min
T.Flow : 0.2 ml/min
B.conc : 50%H2O/50%MeOH