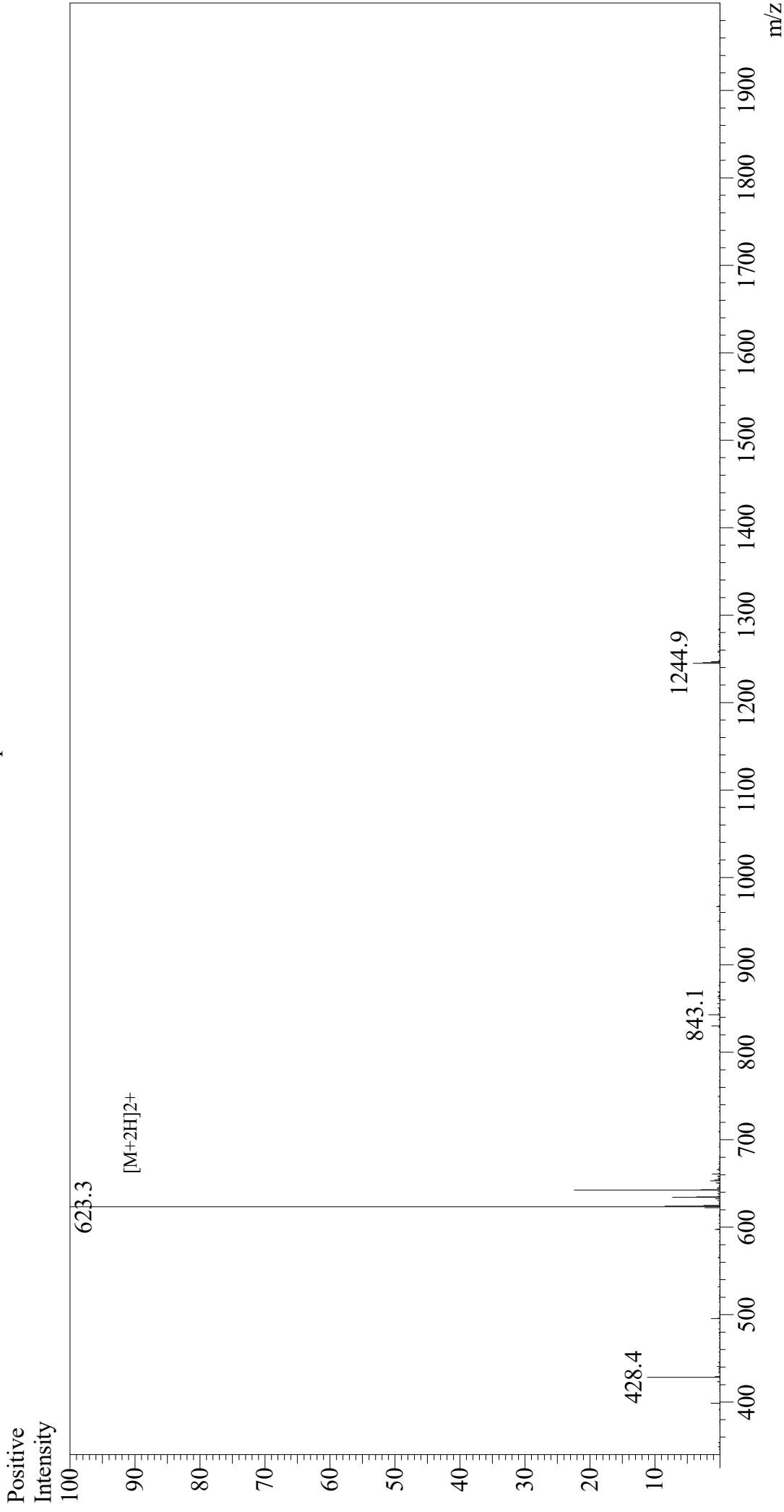


Mass Spectrum



Sample Information

Month-Day Processed : 06/16/21
Time Processed : 14:37:18
Injection Volume : 0.2
Sample Name : CEF14, EBV Rta Protein (28-37)
Cat. No. : RP20442
Lot. No. : E4052421F
Theoretical MW : 1244.38
Observed MW : 1244.6

Interface

Interface : ESI
Nebulizing Gas Flow : 1.5L/min
CDL Temp : 250
Block Temp : 200

Equipment

Equipment : GK11010007
Interface Bias : +4.5 kV
Drying Gas Flow : 5 L/min
T.Flow : 0.2 ml/min
B.conc : 50% H₂O/50% MeOH