

Sample Name : CEF14, EBV Rta Protein (28-37)
 Cat No. : RP20442
 Lot No. : E4052421F
 Time Processed : 20:19:43
 Month-Day-Year Processed : 06/17/2021

Pump A : 0.065% trifluoroacetic in 100% water (v/v)
 Pump B : 0.05% trifluoroacetic in 100% acetonitrile (v/v)
 Total Flow: 1 ml/min
 Wavelength: 220 nm

<<LC Time Program>>

| Time | Module | Command | Value |
|-------|------------|---------|-------|
| 0.01 | Pumps | B.Conc | 5 |
| 25.00 | Pumps | B.Conc | 65 |
| 25.01 | Pumps | B.Conc | 95 |
| 27.00 | Pumps | B.Conc | 95 |
| 27.01 | Pumps | B.Conc | 5 |
| 35.00 | Pumps | B.Conc | 5 |
| 35.01 | Controller | Stop | |

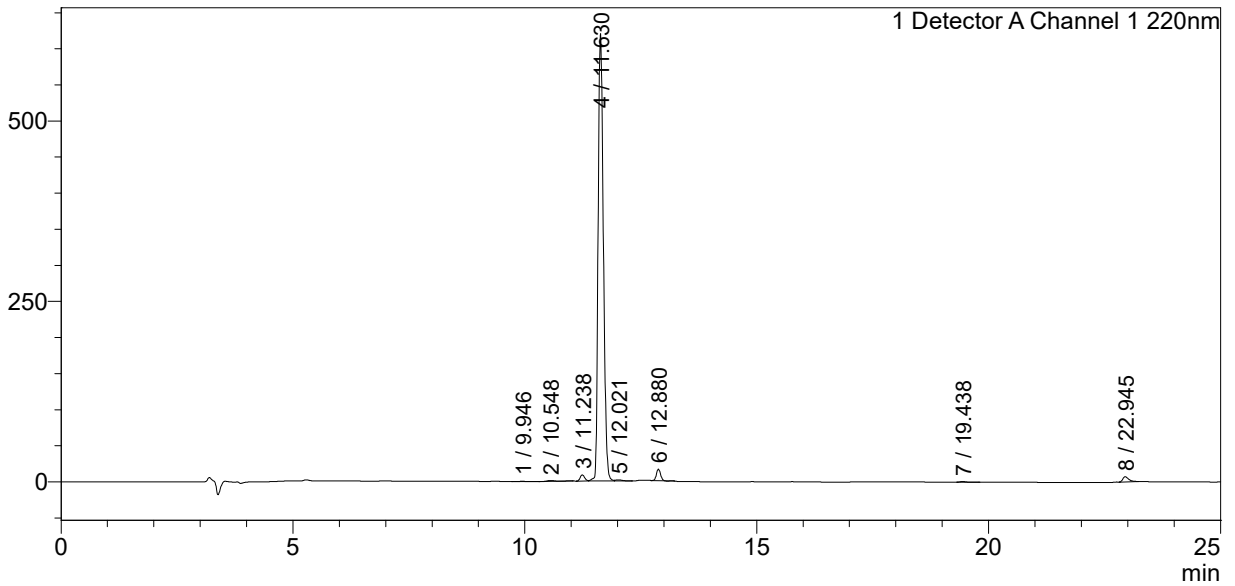
<<Column Performance>>

<Detector A>

Column : Inertsil ODS-3 4.6 x 250 mm
 Equipment: ZJ19010141

<Chromatogram>

mV



<Peak Table>

Detector A Channel 1 220nm

| Peak# | Ret. Time | Area | Height | Area% |
|-------|-----------|---------|--------|---------|
| 1 | 9.946 | 2614 | 214 | 0.051 |
| 2 | 10.548 | 9427 | 1195 | 0.185 |
| 3 | 11.238 | 58214 | 8658 | 1.141 |
| 4 | 11.630 | 4846888 | 619987 | 95.037 |
| 5 | 12.021 | 16512 | 1681 | 0.324 |
| 6 | 12.880 | 98000 | 15939 | 1.922 |
| 7 | 19.438 | 5637 | 1006 | 0.111 |
| 8 | 22.945 | 62707 | 7164 | 1.230 |
| Total | | 5100000 | 655844 | 100.000 |