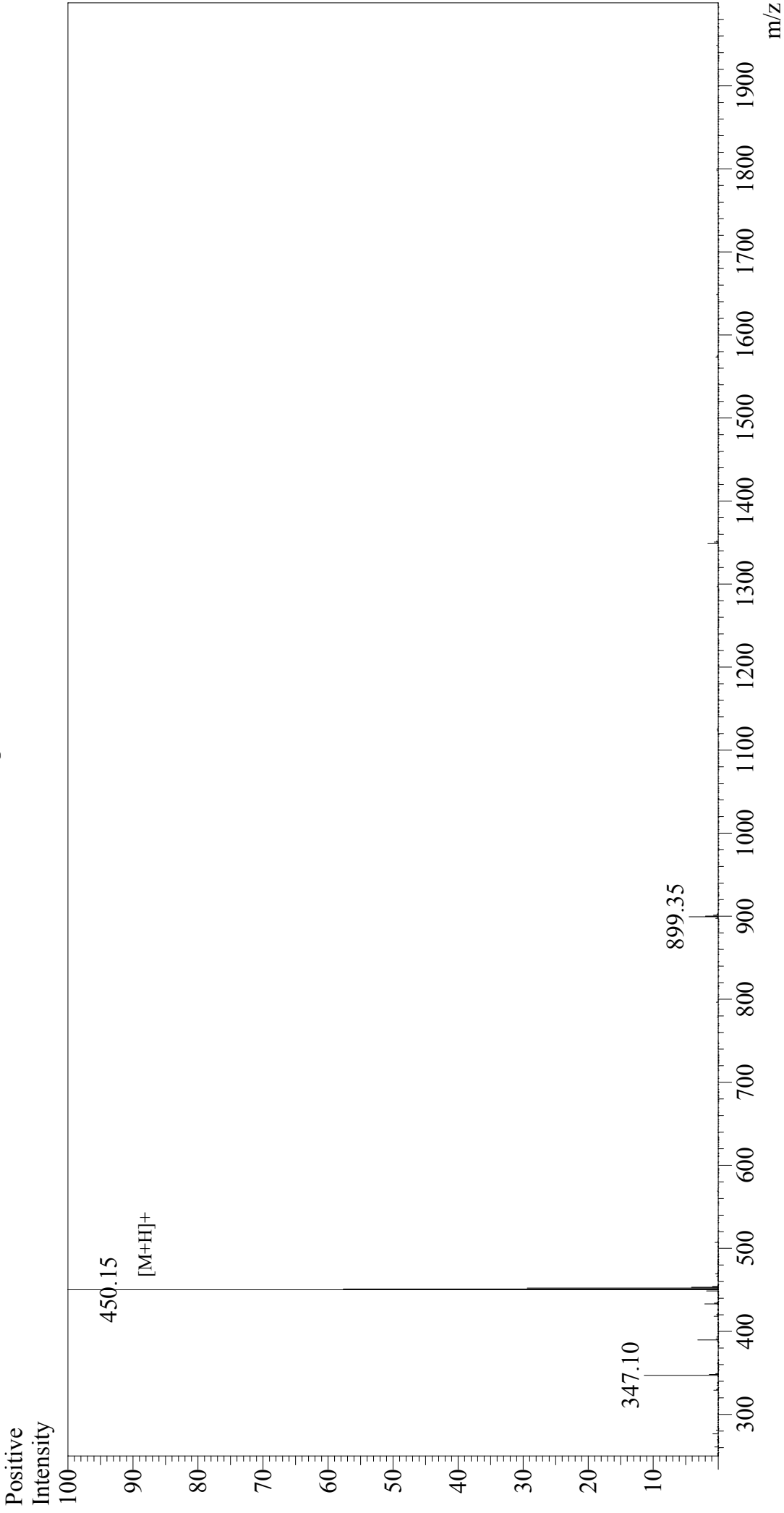


Mass Spectrum



Sample Information

Acquired by : Gary
Month-Day Processed : 10/10/17
Time Processed : 16:22:32
Injection Volume : 0.2
Sample Name : Arg-Gly-Asp-Cys
Cat No.: RPI0860
Lot No.: PE1821709
Theoretical MW : 449.48
Observed MW : 449.15

Interface

Interface : ESI
Nebulizing Gas Flow : 1.5L/min
CDL Temp : 250°C
Block Temp : 200°C

Interface Bias

Interface Bias : +4.5 kV
Drying Gas Flow : 5 L/min
T.Flow : 0.2 ml/min
B.conc : 50%H2O/50%MeOH