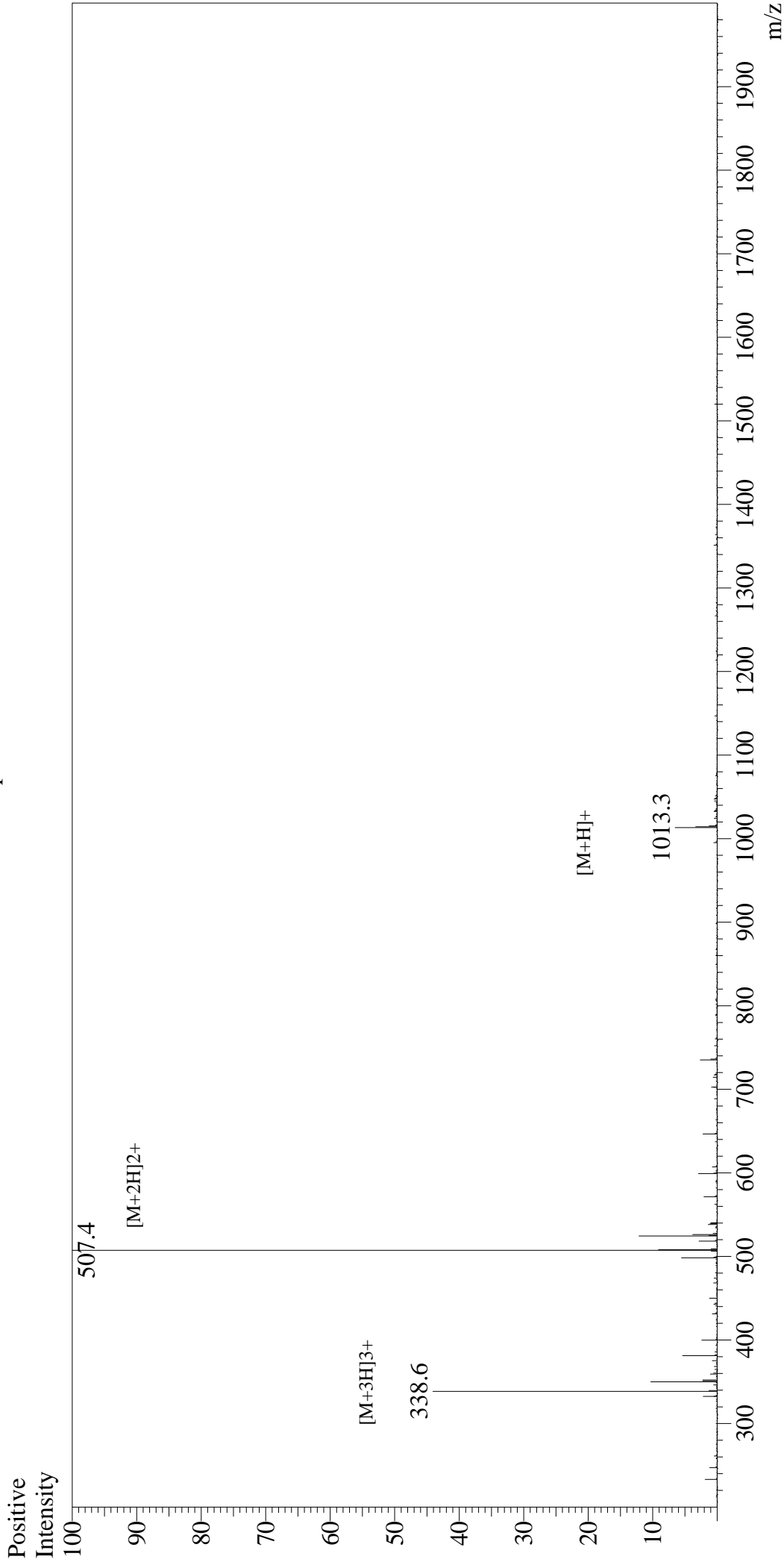


# Mass Spectrum



Sample Information  
Month-Day Processed : 11/12/20  
Time Processed : 23:06:05  
Injection Volume : 0.5  
Sample Name : DYKDDDDDK Peptide  
Cat No. : RP10586  
Lot No. : E8652620K  
Theoretical MW : 1012.97  
Observed MW : 1012.8

Interface : ESI  
Nebulizing Gas Flow : 1.5L/min  
CDL Temp : 250  
Block Temp : 200

Equipment : GK11010007  
Interface Bias : +4.5kV  
Drying Gas Flow : 5 L/min  
T.Flow : 0.2ml/min  
B.conc : 50%H2O/50%MeOH