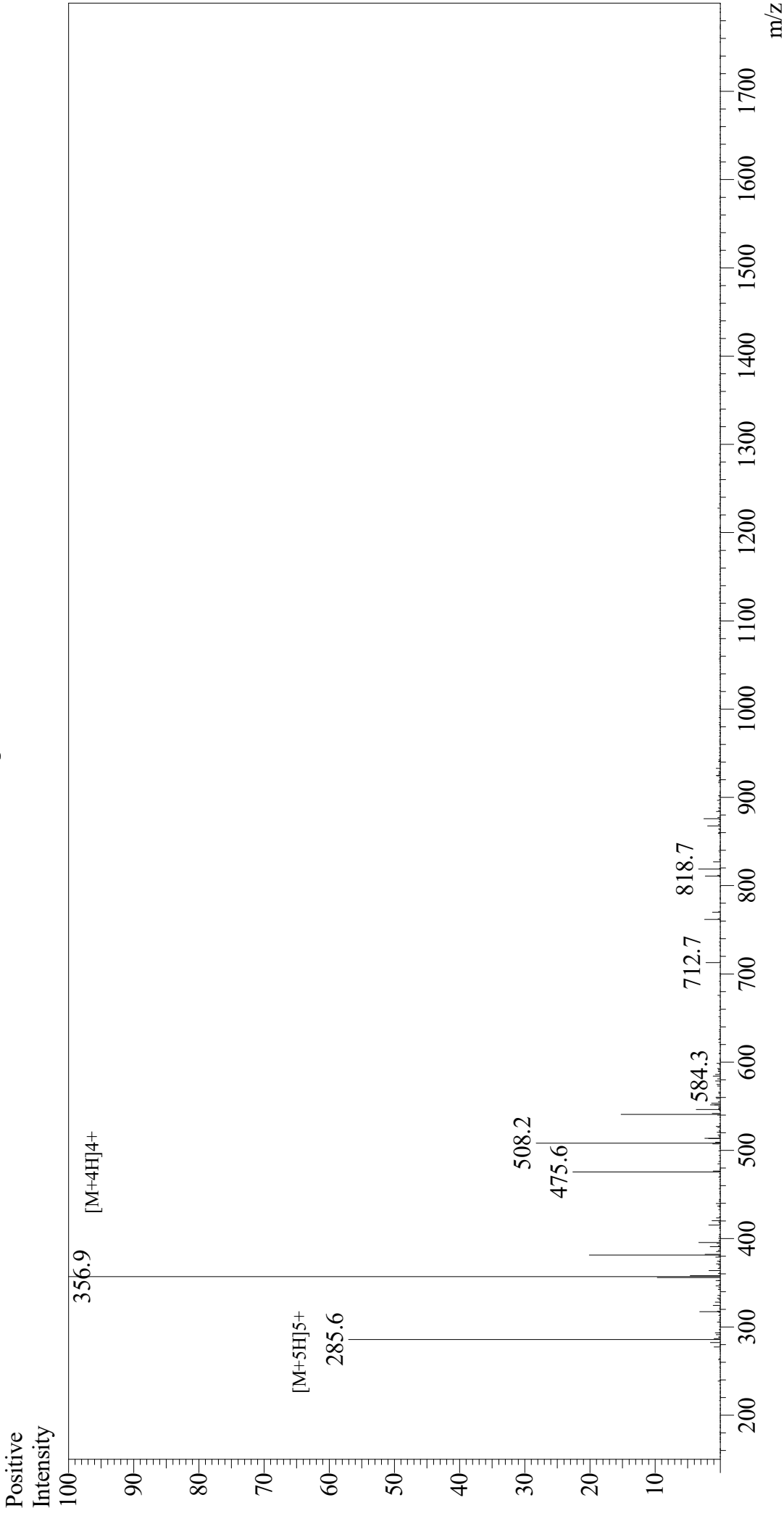


Mass Spectrum



Sample Information
Month-Day Processed : 06/12/21
Time Processed : 20:34:40
Injection Volume : 0.2
Sample Name : (Arg)9
Cat. No. : RP20403
Lot. No. : E9905021F
Theoretical MW : 1423.70
Observed MW : 1423.6

Interface : ESI
Nebulizing Gas Flow : 1.5L/min
CDL Temp : 250
Block Temp : 200
Equipment : GK11010007
Interface Bias : +4.5 kV
Drying Gas Flow : 5 L/min
T.Flow : 0.2 ml/min
B.conc : 50% H2O/50% MeOH