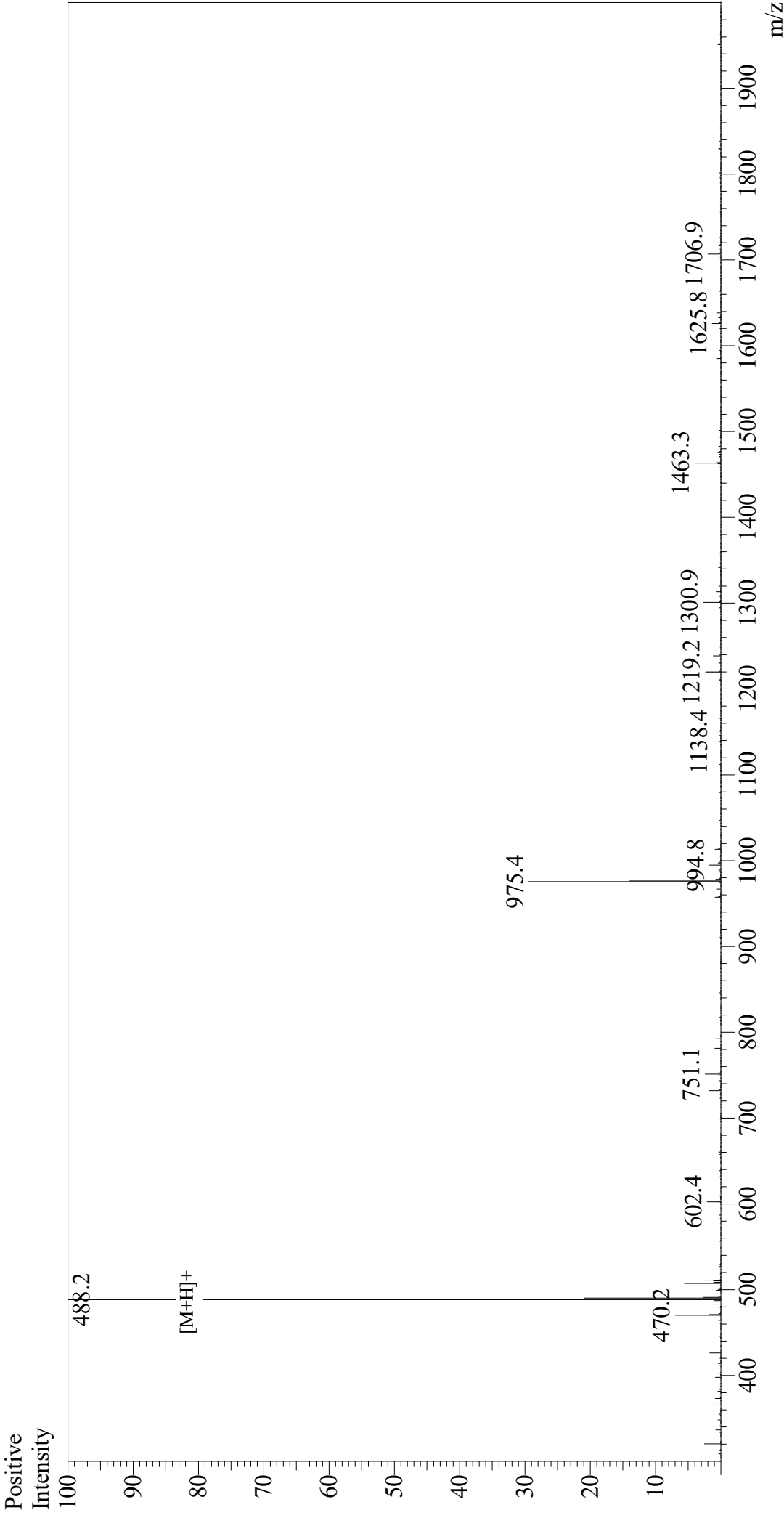


Mass Spectrum



Sample Information

Acquired by : Gary
Month-Day Processed : 09/20/19
Time Processed : 09:34:05 PM
Injection Volume : 0.3
Sample Name : N-Acetyl-Ser-Asp-Lys-Pro
Cat. No. : RP10555
Lot. No. : E4745219I
Theoretical MW : 487.50
Observed MW : 487.2

Interface : ESI
Nebulizing Gas Flow : 1.5L/min
CDL Temp : 250
Block Temp : 200

Equipment : GK11010007
Interface Bias : +4.5 kV
Drying Gas Flow : 5 L/min
T.Flow : 0.2 ml/min
B.conc : 50% H2O/50% MeOH