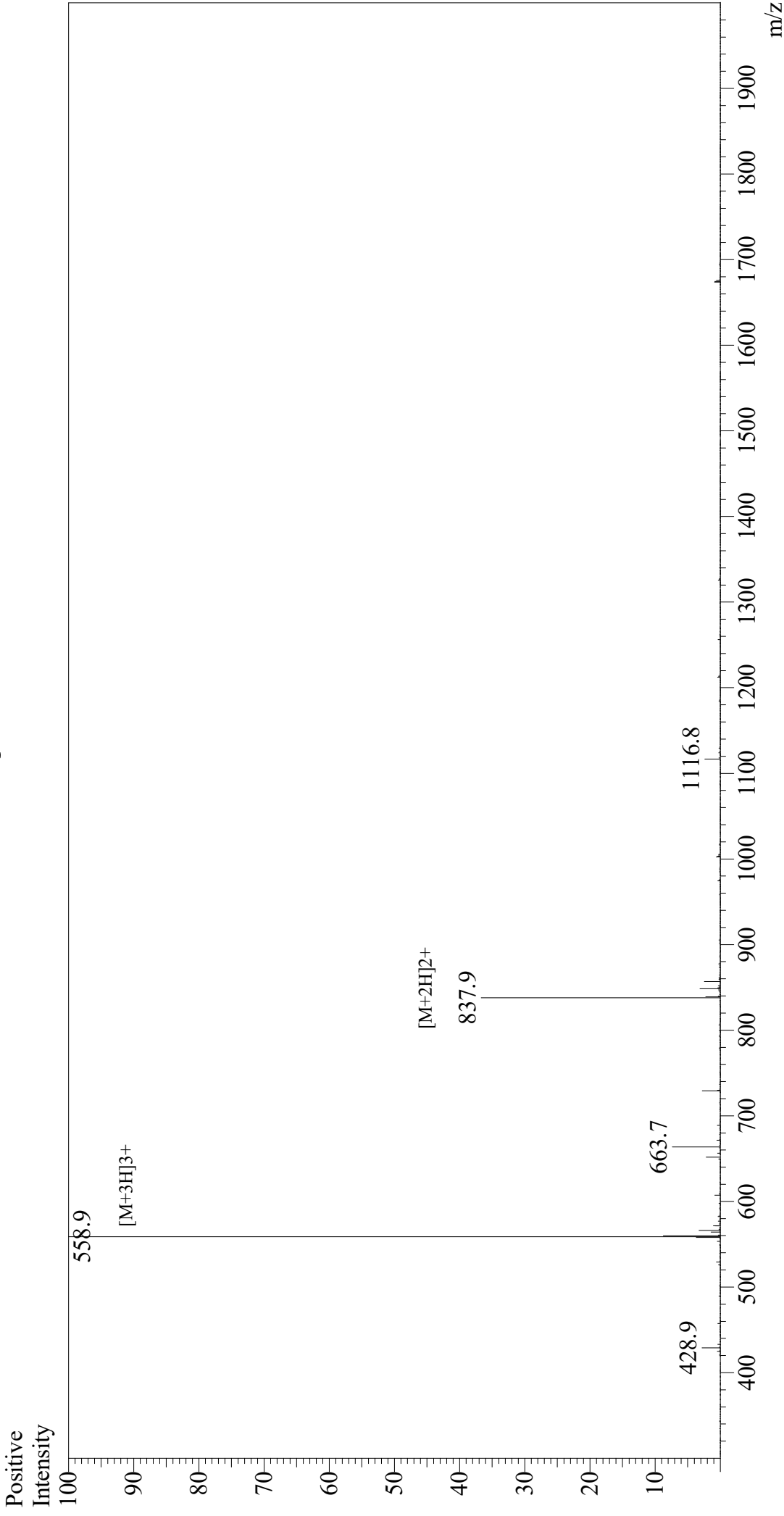


# Mass Spectrum



## Sample Information

Acquired by : Gary  
Month-Day Processed : 05/08/20  
Time Processed : 12:22:50 PM  
Injection Volume : 0.3  
Sample Name : CLIP (86-100)  
Cat. No. : RP20279  
Lot. No. : E5608520E  
Theoretical MW : 1674.10  
Observed MW : 1673.7

Equipment : GK11010007  
Interface Bias : +4.5 kV  
Drying Gas Flow : 5 L/min  
T.Flow : 0.2 ml/min  
B.conc : 50% H2O/50% MeOH

Interface : ESI  
Nebulizing Gas Flow : 1.5 L/min  
CDL Temp : 250  
Block Temp : 200