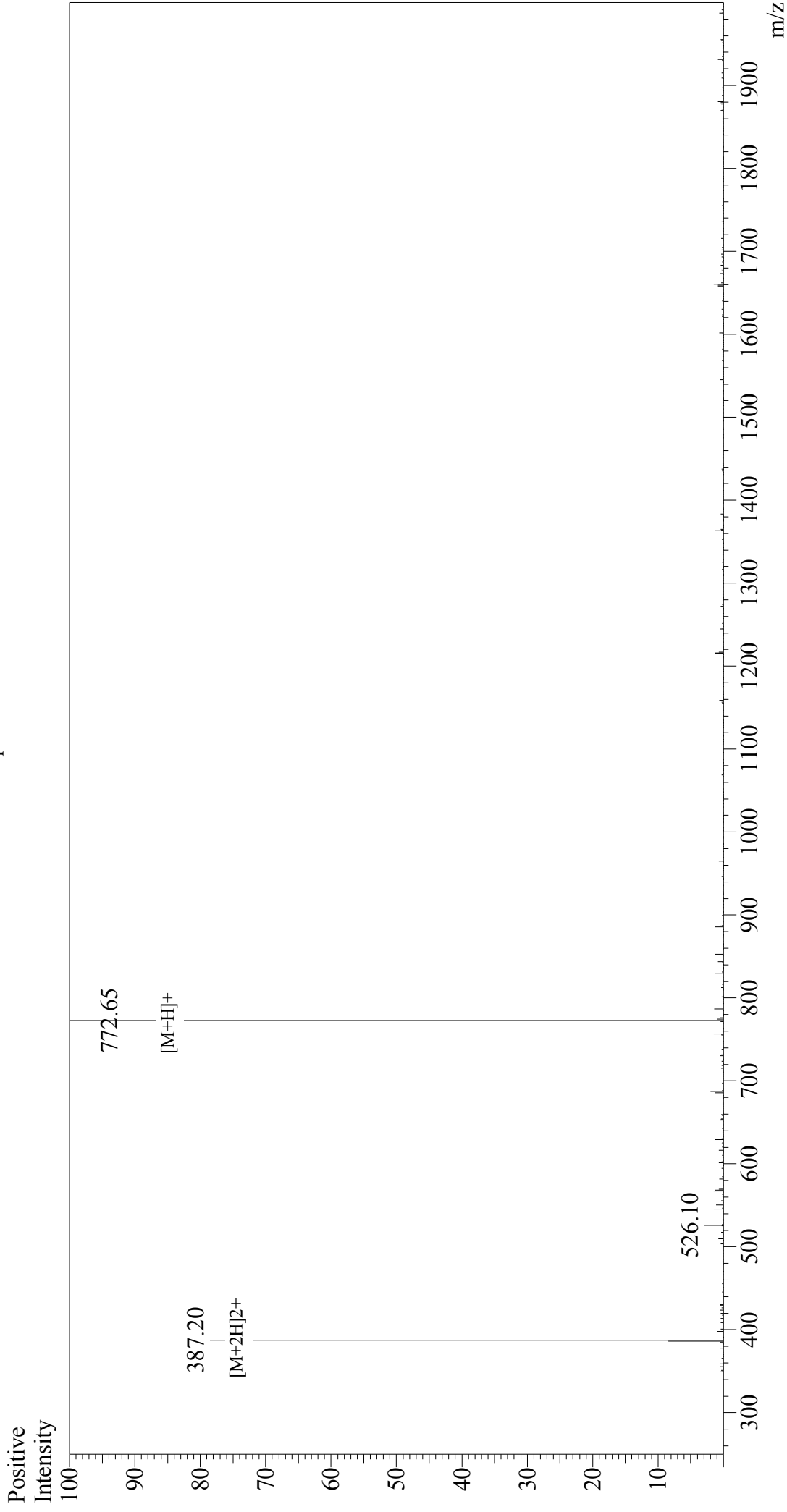


Mass Spectrum



Sample Information

Acquired by : Gary
Month-Day Processed : 12/09/17
Time Processed : 14:27:10
Injection Volume : 0.2
Sample Name : Kemptide
Cat. No. : RP10287
Lot. No. : PE2061711
Theoretical MW : 771.90
Observed MW : 771.65

Interface : ESI
Nebulizing Gas Flow : 1.5L/min
CDL Temp : 250°C
Block Temp : 200°C

Interface Bias : +4.5 kV
Drying Gas Flow : 5 L/min
T.Flow : 0.2 ml/min
B.conc : 50% H₂O/50% MeOH