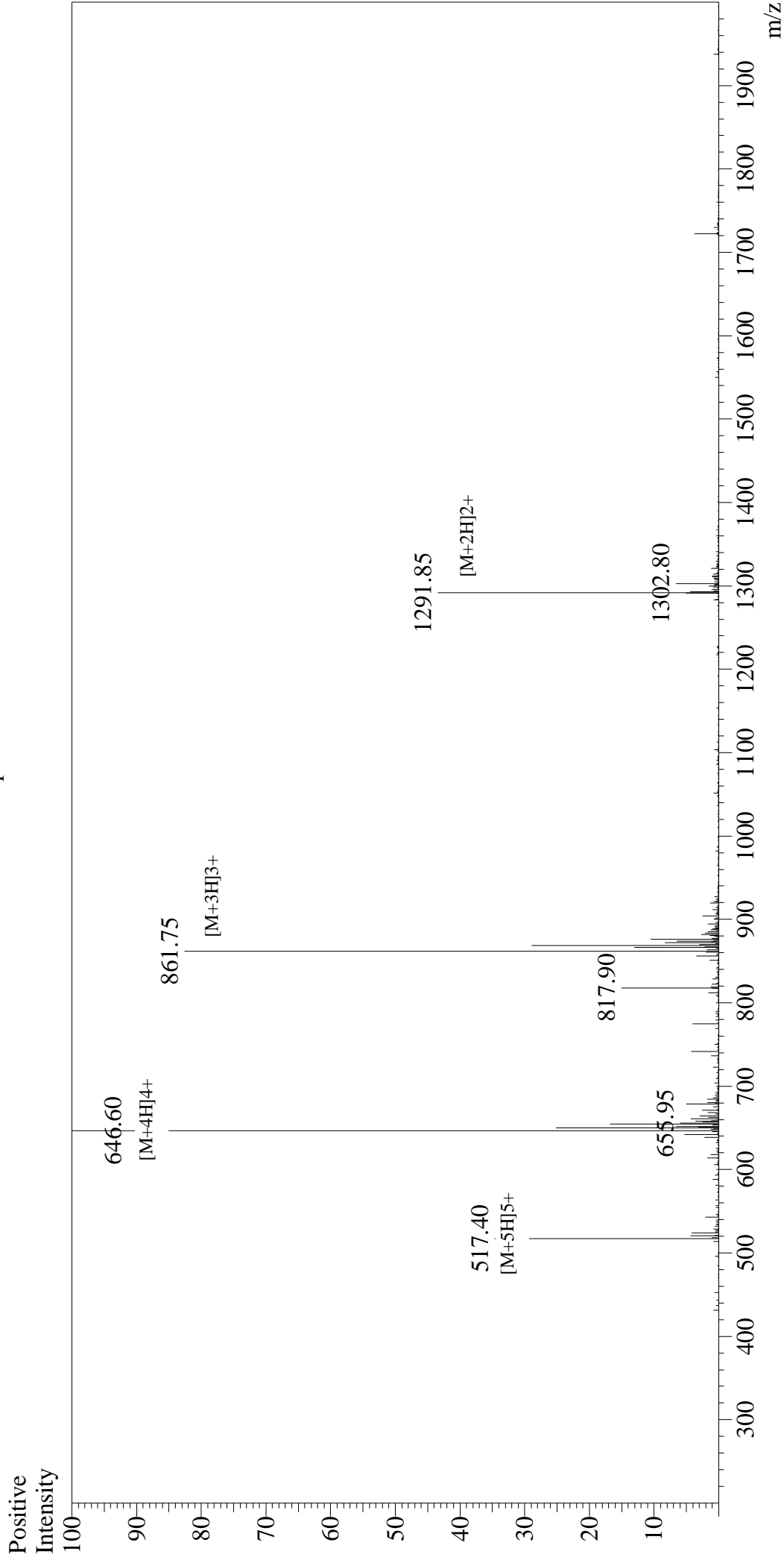


# Mass Spectrum



## Sample Information

User : Gary  
Month-Day Processed : 05/19/17  
Time Processed : 16:53:14  
Injection Volume : 0.2  
Sample Name : MOG (35-55 )  
Cat No. : RP10245  
Lot No. : PE6661705  
Theoretical MW : 2581.98  
Observed MW : 2582.40

## Interface

Interface : ESI  
Nebulizing Gas Flow : 1.5L/min  
CDL Temp : 250°C  
Block Temp : 200°C

## Interface Bias

Interface Bias : +4.5kV  
Drying Gas Flow : 5 L/min  
T.Flow : 0.2ml/min  
B.conc : 50%H<sub>2</sub>O/50%MeOH