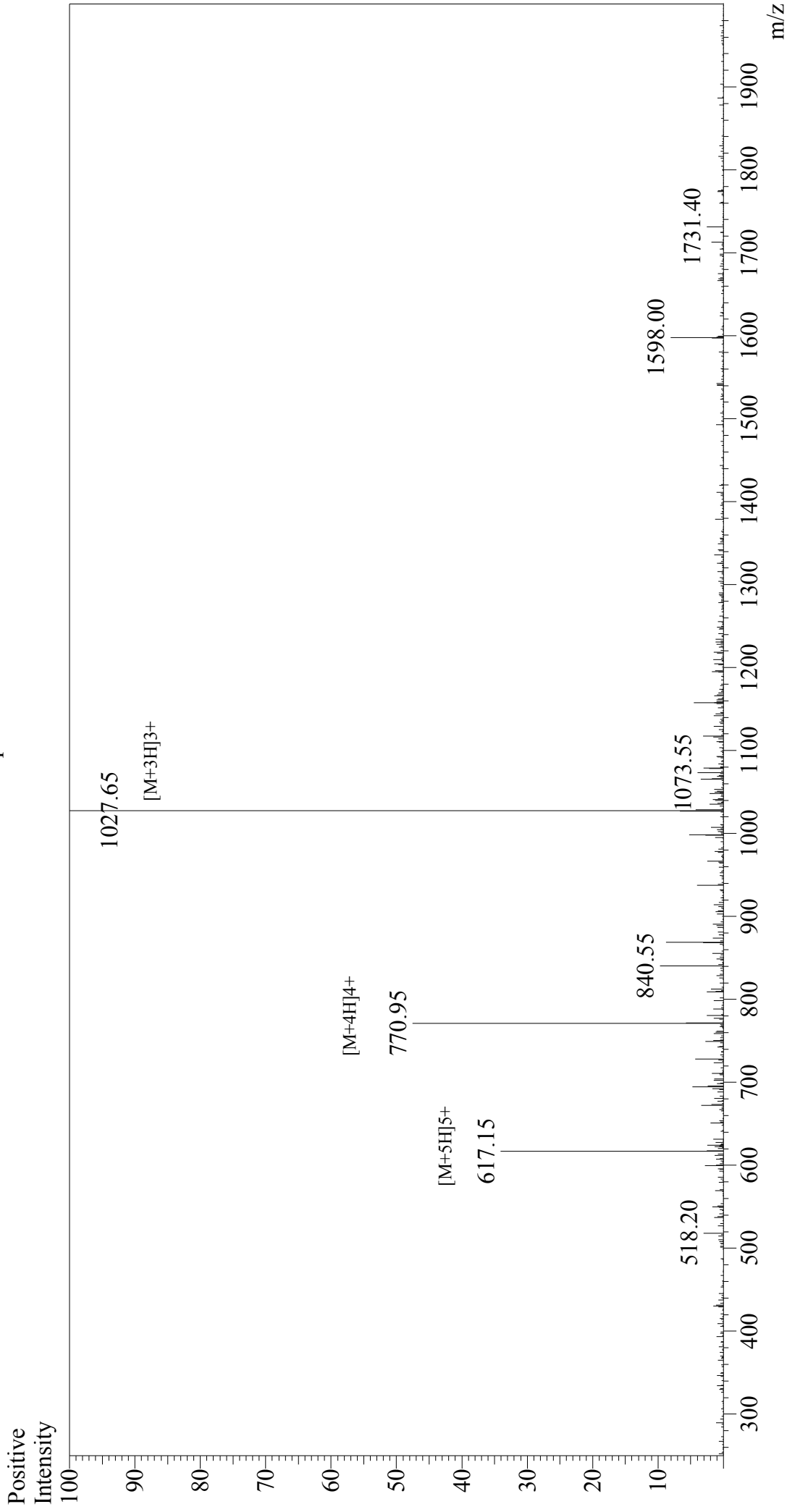


Mass Spectrum



Sample Information

Acquired by : Gary
 Month-Day Processed : 12/28/17
 Time Processed : 15:10:33
 Injection Volume : 0.4
 Sample Name : Atrial Natriuretic Peptide (ANP) (1-28), human, porcine
 Cat. No. : RP11927
 Lot. No. : PE6541712
 Theoretical MW : 3080.50
 Observed MW : 3079.95

Interface : ESI
 Nebulizing Gas Flow : 1.5L/min
 CDL Temp : 250°C
 Block Temp : 200°C

Interface Bias : +4.5 kV
 Drying Gas Flow : 5 L/min
 T.Flow : 0.2 ml/min
 B.conc : 50% H₂O/50% MeOH