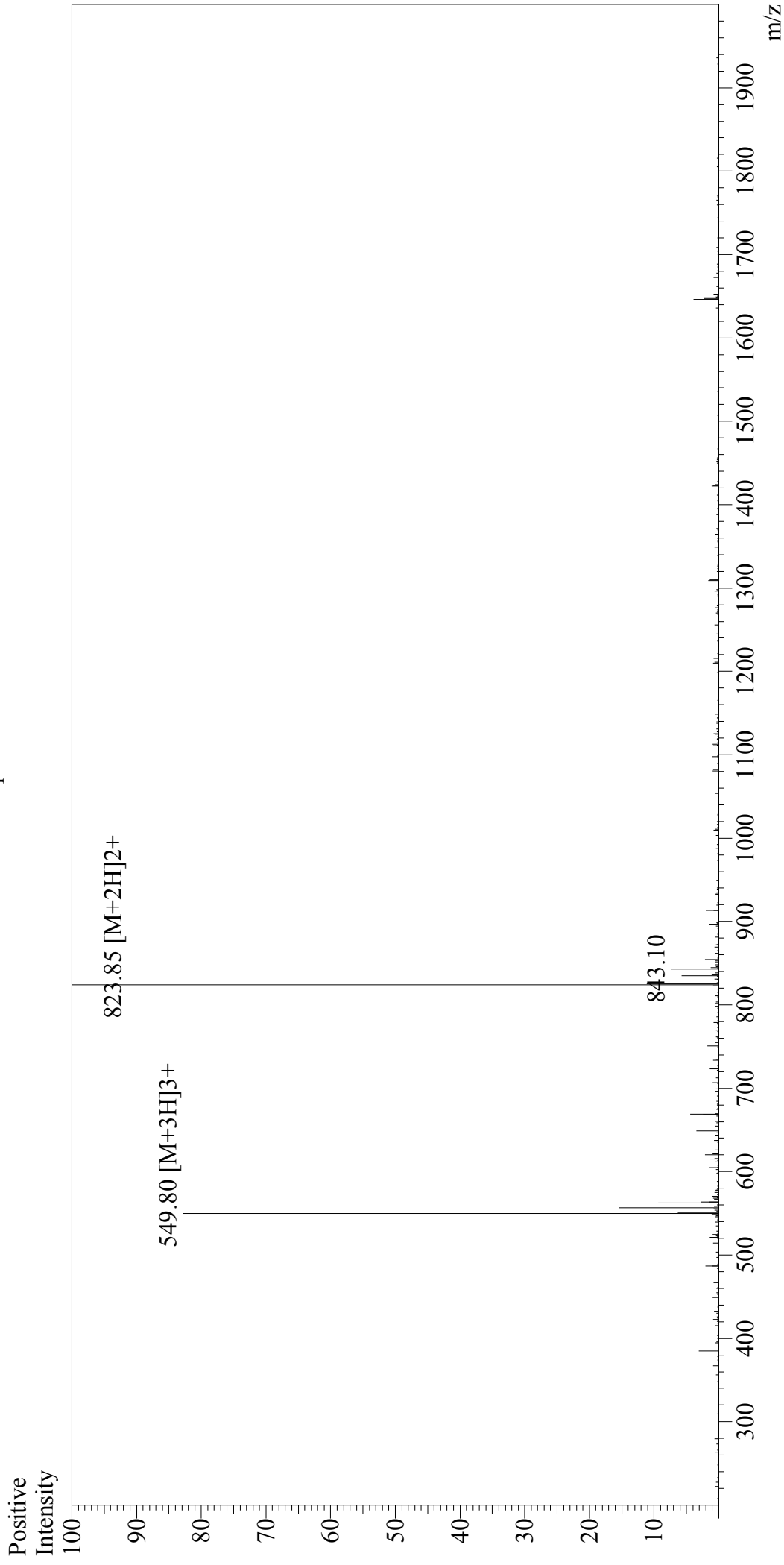


# Mass Spectrum



## Sample Information

User : Gary  
Month-Day Processed : 11/03/17  
Time Processed : 14:51:14  
Injection Volume : 0.2  
Sample Name : InsB 9-23  
Cat No. : RP20391  
Lot No. : PE4481710  
Theoretical MW : 1645.9  
Observed MW : 1645.70

Interface : ESI  
Nebulizing Gas Flow : 1.5L/min  
CDL Temp : 250°C  
Block Temp : 200°C

Interface Bias : +4.5kV  
Drying Gas Flow : 5 L/min  
T.Flow : 0.2ml/min  
B.conc : 50%H2O/50%MeOH