

Sample Name :Gastrin-1, human
 Cat. No. : RP12740
 Lot. No. : E2518120H
 Time Processed :4:16:56 PM
 Month-Day-Year Processed :08/20/2020

Pump A : 0.065% trifluoroacetic in 100% water (v/v)
 Pump B : 0.05% trifluoroacetic in 100% acetonitrile (v/v)
 Total Flow:1 ml/min
 Wavelength:220 nm

<<LC Time Program>>

| Time | Module | Command | Value |
|-------|------------|-----------------|-------|
| 0.01 | Pumps | Solvent B Conc. | 5 |
| 25.00 | Pumps | Solvent B Conc. | 65 |
| 25.01 | Pumps | Solvent B Conc. | 95 |
| 27.00 | Pumps | Solvent B Conc. | 95 |
| 27.01 | Pumps | Solvent B Conc. | 5 |
| 35.00 | Pumps | Solvent B Conc. | 5 |
| 35.01 | Controller | Stop | |

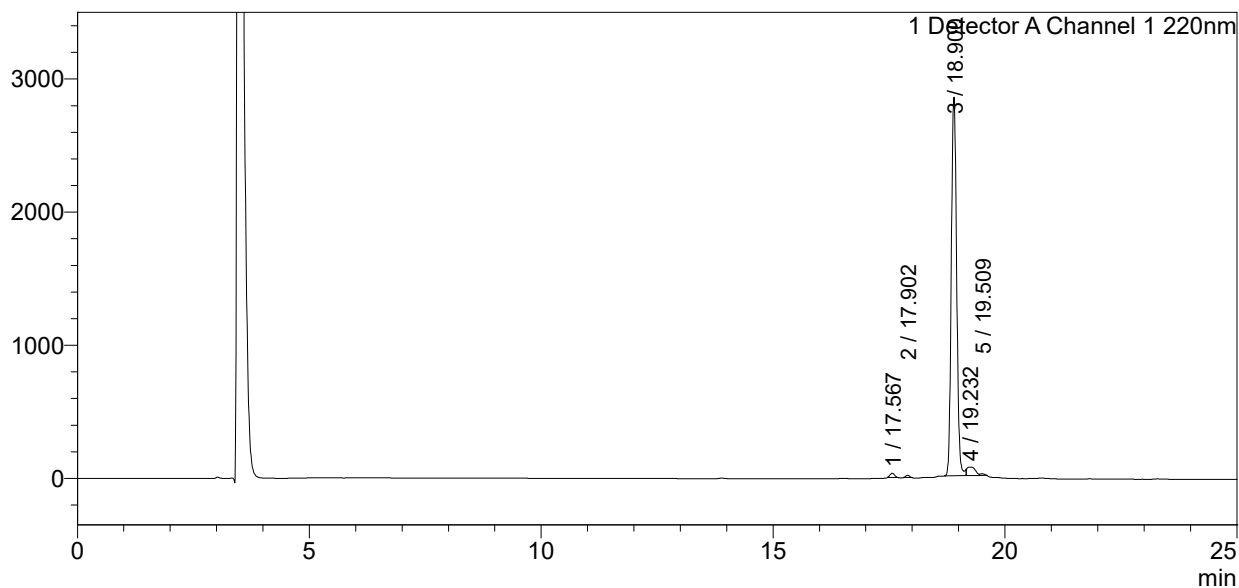
<<Column Performance>>

<Detector A>

Column : Alltima™ C18 4.6 x 250 mm
 Equipment:ZJ17010508

<Chromatogram>

mV



<Peak Table>

Detector A Channel 1 220nm

| Peak# | Ret. Time | Area | Height | Area% |
|-------|-----------|----------|---------|---------|
| 1 | 17.567 | 223701 | 32368 | 0.940 |
| 2 | 17.902 | 90445 | 16300 | 0.380 |
| 3 | 18.900 | 22626006 | 2843014 | 95.073 |
| 4 | 19.232 | 780019 | 63789 | 3.278 |
| 5 | 19.509 | 78468 | 12545 | 0.330 |
| Total | | 23798639 | 2968016 | 100.000 |