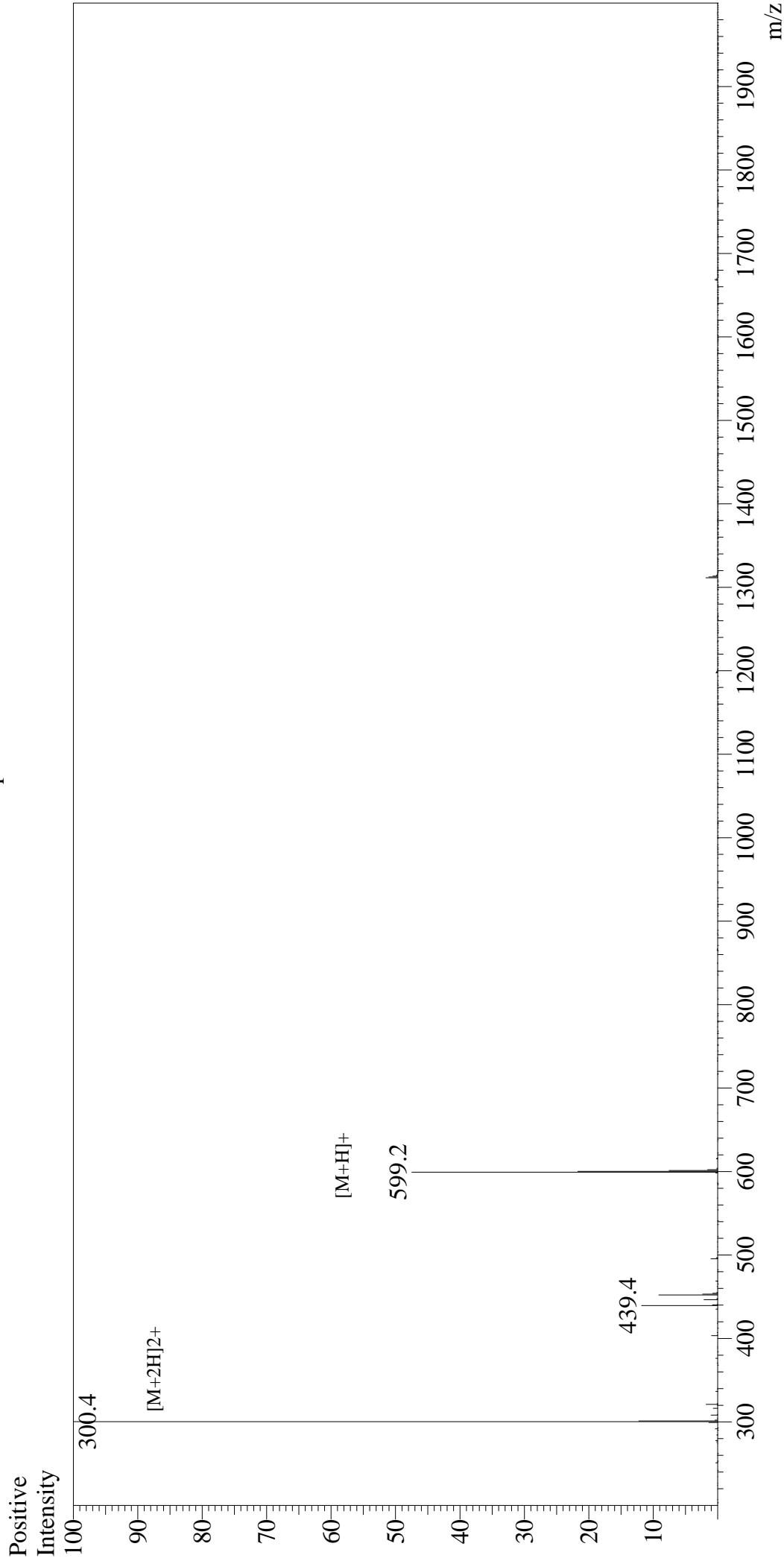


# Mass Spectrum



## Sample Information

User : Gary  
Month-Day Processed : 08/28/19  
Time Processed : 16:52:46  
Injection Volume : 0.3  
Sample Name : Phe-Met-Arg-Phe, amide  
Cat No. : RP10818  
Lot No. : E0428719H  
Theoretical MW : 598.76  
Observed MW : 598.8

Interface : ESI  
Nebulizing Gas Flow : 1.5L/min  
CDL Temp : 250  
Block Temp : 200

Equipment : GK11010007  
Interface Bias : +4.5kV  
Drying Gas Flow : 5 L/min  
T.Flow : 0.2ml/min  
B.conc : 50%H<sub>2</sub>O/50%MeOH